



**Office of
Institutional
Research**

Career Outcomes

- 2007 Annual Graduate Survey-

IR Report # 183

October 2008

**Community
College
of Philadelphia**

Career-Related Degrees and Certificates Awarded

Based on the years represented in Figure 1, the greatest number of career-program associate's degrees awarded by CCP was in 1997. Since this time, career-program degrees dropped to a low of 569 in 2001 and rebounded to 651 degrees in 2007. The College awarded 238 certificates in 2007 which represents the highest level over the eleven years represented in Figure 1 and 77 more certificates awarded than in 2006.

***Figure 1
Number of Associate Degrees and Certificates Awarded in Career-related Programs
Academic Years 1997-2007***

Type of Award	1997	1998	1999	2000	2001	2002	2003	2004	2005	2006	2007
Associates Degrees	742	671	699	636	569	576	593	629	644	608	651
Certificates	181	199	175	188	162	134	133	160	154	161	238

Employment Outcomes for Career Program Graduates

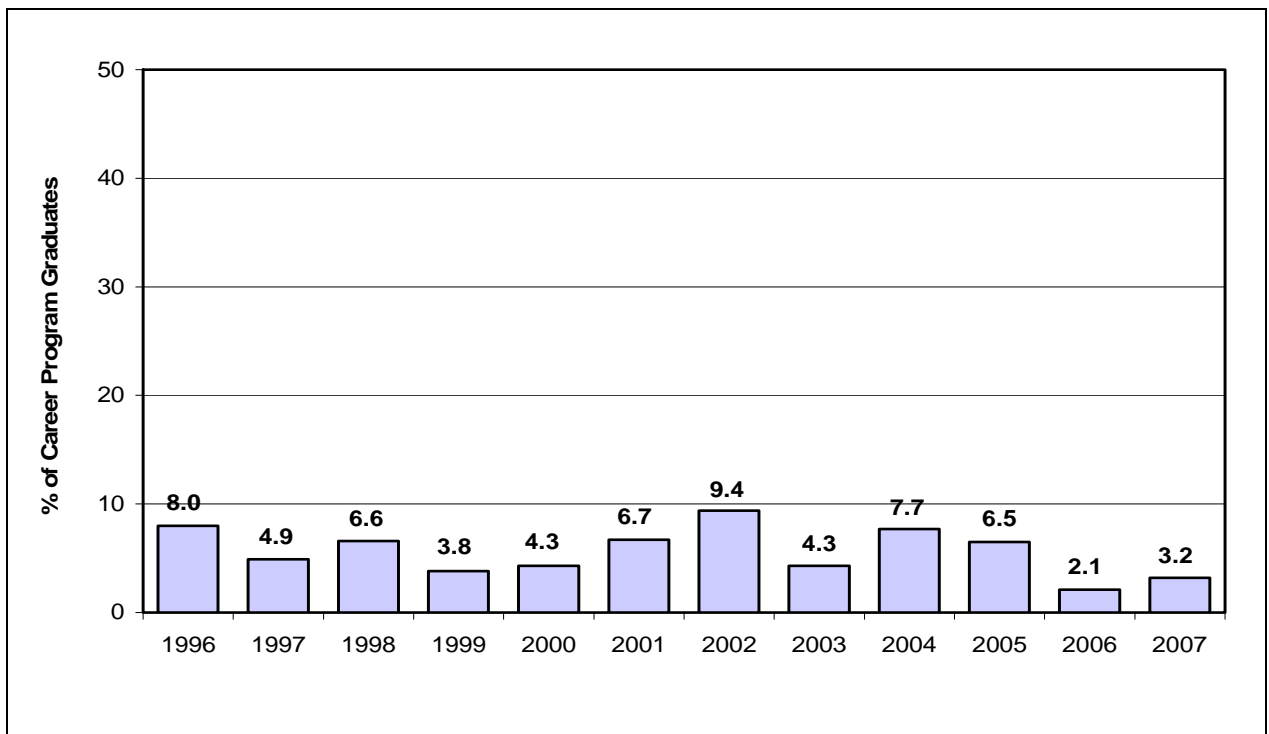
The Office of Institutional Research includes a standard set of employment-related items on the questionnaire used to survey the College's graduates. This survey, which is typically completed eight to fifteen months after commencement, gathers information concerning the graduate's employment status, the relationship of the graduate's current job to their program of study at CCP, annual salary, and the graduate's assessment of the career preparation they received while attending the College. The information provided in this report includes CCP graduates from 1996 through 2007.

As of October 2007, 185 (28.4%) career program graduates from 2007 returned completed questionnaires. Nearly half (49%) of these graduates enrolled at CCP because

of potential or actual loss of a job or concerns about the lack of future job opportunities in their field of employment.

The self-reported unemployment rate of CCP career program graduates shortly after graduation has fluctuated over time (Figure 2). Graduates in 2002 were the most likely graduating class since 1996 to describe themselves as unemployed while 2006 graduates were least likely to have been actively looking for employment at the time of the survey. The unemployment level for 2007 graduates ticked up 1.1 % from the previous year.¹

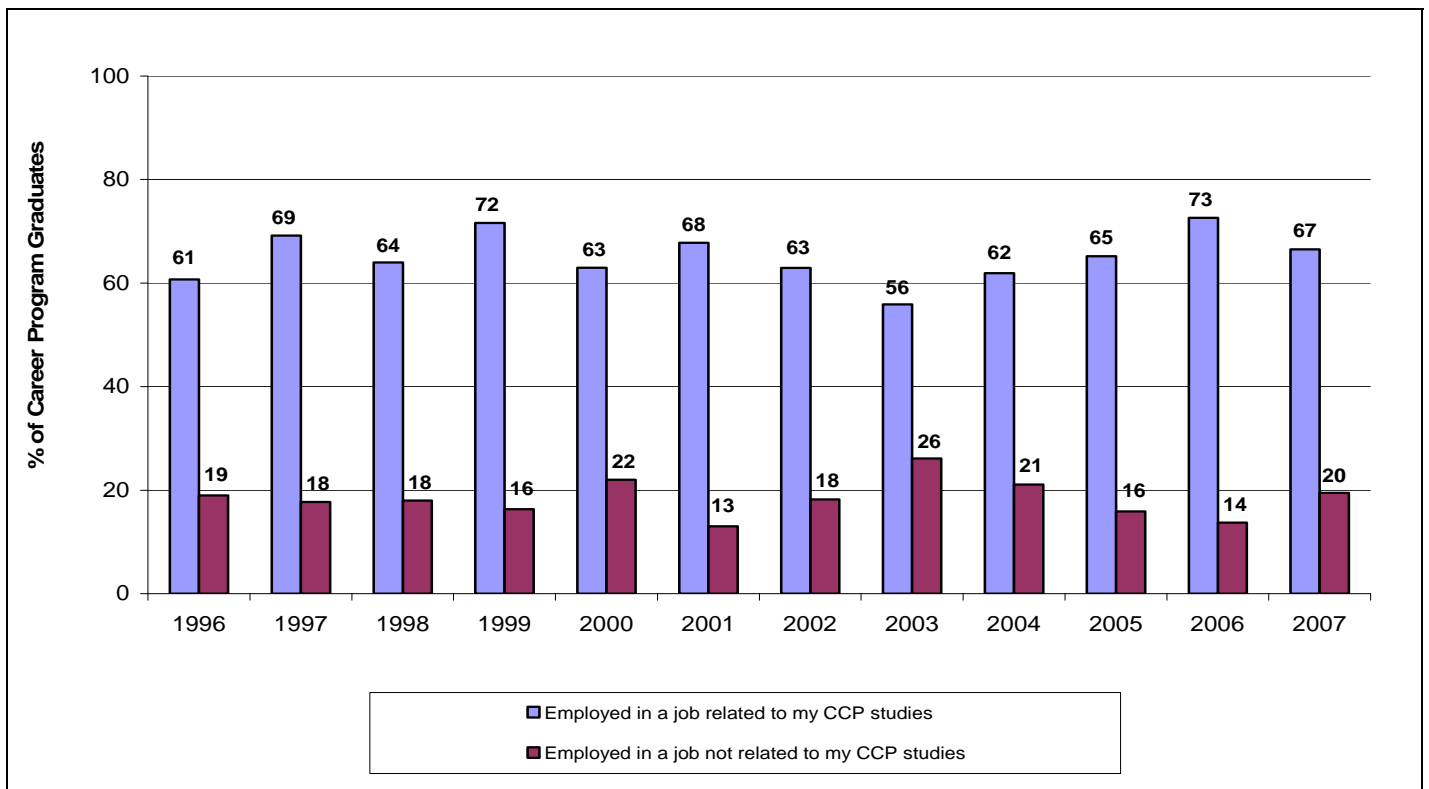
Figure 2
Career Graduates Who Were Unemployed at the Time of the Survey
and Actively Looking for Employment
1997 – 2007



¹ There is a relatively strong association between the regional unemployment rate and the rate reported by CCP graduates.

The percentage of career program graduates who were working in a job that was related to their program of study has fluctuated between 58% and 73% since 1996 (Figure 3). Graduates in 2006 were the most likely graduating class to be in a related job. The level dropped 6% to 67% for 2007 graduates.

Figure 3
Relationship of Job to Program of Study
Career Program Graduates 1996 – 2007



The average annual salary earned by 2006 career program graduates shortly after graduation was \$41,865 which was an increase of \$1,942 from the previous year's average salary (Figure 4). For 2007 graduates, the average salary decreased from the previous year by \$1,094 to \$40,771.

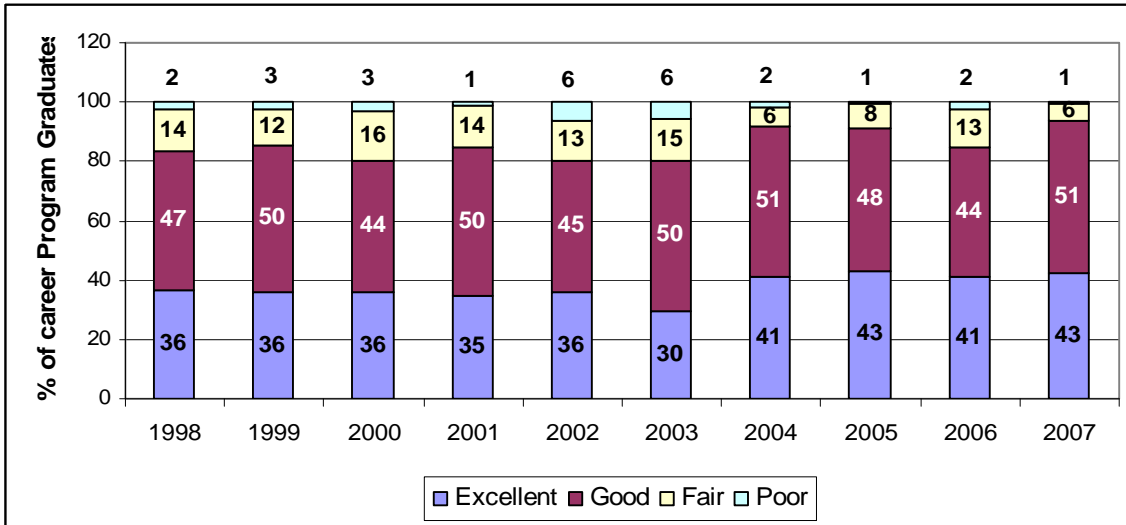
Figure 4
Annual Salaries of Graduates Working in Full-Time² Jobs
1996 – 2007

Graduation Year	Mean
1996	\$27,534
1997	\$26,402
1998	\$30,592
1999	\$30,980
2000	\$32,189
2001	\$37,923
2002	\$38,903
2003	\$37,103
2004	\$41,203
2005	\$39,923
2006	\$41,865
2007	\$40,771

Most graduates value the career preparation they received while at CCP. In the last four years there has been a trend towards greater levels of satisfaction among graduates (Figure 5). Ninety-four percent (94%) of 2007 graduates who were working rated their preparation as either good or excellent. This represents the highest level of satisfaction over the time frame represented in Figure 5. Only 1% of respondents to this question in 2007 rated their CCP employment preparation as poor.

¹ Full time employment was defined as 30 hours or more per week.

Figure 5
Career Program Graduates Assessment of Their CCP
Preparation for the Workplace
1998 – 2007



Summary

Overall, the career outcomes experienced by 2007 career graduates were very positive and in several areas exceeded the outcomes of their predecessors. Graduates in 2007 were more likely than many earlier graduates to be employed in a job that is related to their CCP studies. Fewer graduates in 2007 were unemployed and actively looking for work at the time of the survey. Most 2007 graduates felt the College prepared them well for the demands they encountered in the workforce.