



# Office of Institutional Research

## Career Outcomes: Responses to the 2006 Annual Graduate Survey

IR Report #171

October 2007

Community  
College  
*of* Philadelphia

## **Career Outcomes for 2006 Career Program Graduates**

In 2006, the Community College of Philadelphia (CCP) awarded 608 associate degrees and 161 certificates in career-related programs. Compared with 2005, there were 36 less associate degrees and 7 more certificates awarded in 2006 (Figure 1).

**Figure 1**  
**Number of Associate Degrees and Certificates Awarded in Career-related Programs**  
**Academic Years 1997-2006**

<b>Type of Award</b>	<b>1997</b>	<b>1998</b>	<b>1999</b>	<b>2000</b>	<b>2001</b>	<b>2002</b>	<b>2003</b>	<b>2004</b>	<b>2005</b>	<b>2006</b>
<b>Associates Degrees</b>	742	671	699	636	569	576	593	629	644	608
<b>Certificates</b>	181	199	175	188	162	134	133	160	154	161

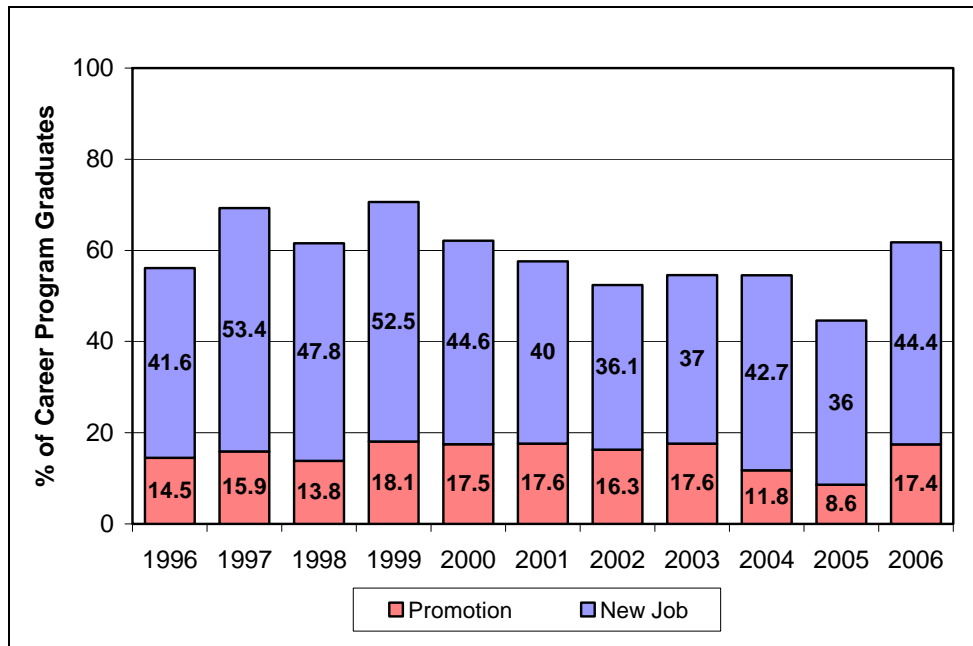
Over the last several years, the Office of Institutional Research has included a standard set of employment-related items on the questionnaire used to survey the College's recent graduates. This survey, which is typically completed eight to twelve months after commencement, gathers information concerning the graduate's employment status, the relationship of the graduate's current job to their program of study at CCP, annual salary, and the graduate's assessment of the career preparation they received while attending the College. The information provided in this report includes CCP graduates from 1997 through 2006.

As of October 2006, 160 (26%) career program graduates from 2006 returned completed questionnaires. Forty-four percent (44%) of those enrolled in a career program enrolled at the College because of potential or actual loss of a job or concerns about the lack of future job opportunities in their field of employment.

Forty-four percent (44.4%) of 2006 career graduates were employed in a new job at the time they took the survey, compared with 36% from the graduating class of 2005 (Figure 2). The percentage of graduates who received promotions subsequent to graduating increased significantly between 2005 and 2006, rising from 8.6% of 2005 career program graduates to 17.4% of 2006 graduates.

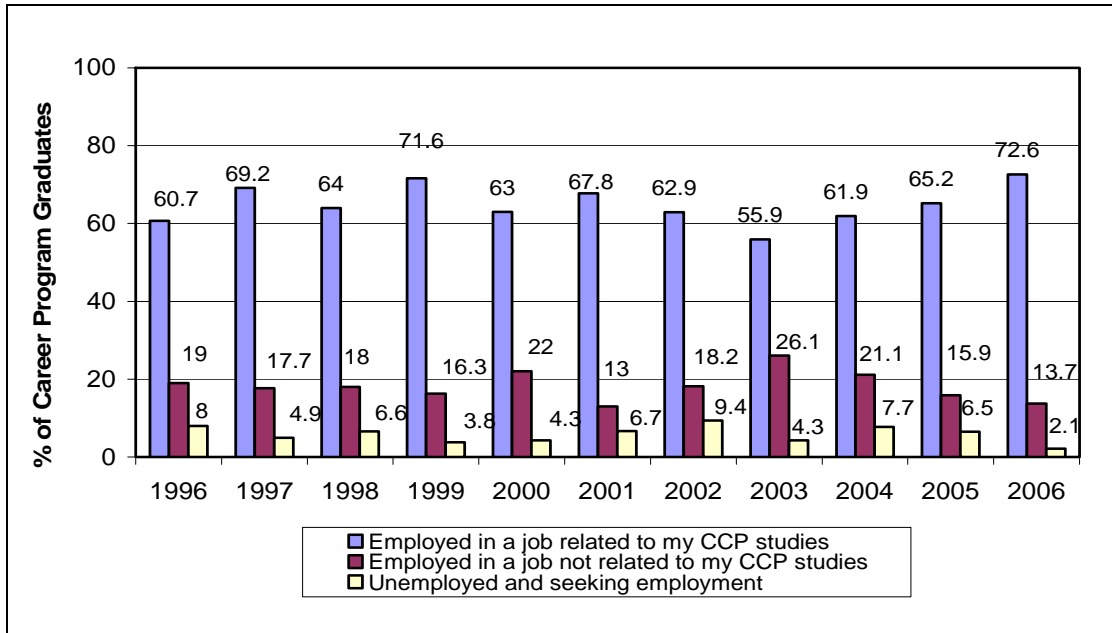
**Figure 2**

**Career Graduates Who Were Working in a New Job with a New Employer or Received a Promotion Shortly After Graduation  
1997 – 2006**



There was a significant drop in the percentage of career graduates who were actively seeking employment at the time they answered the survey (2.1% in 2006 compared to 6.5% in 2005) (Figure 3). Career program graduates in 2006 were more likely (72%) than graduates in 2005 (65%) to be working in jobs that were related to their program of study.

**Figure 3**  
**Relationship of Job to Program of Study**  
**1996 – 2006**



The average annual salary earned by 2006 career program graduates shortly after graduation was \$41,865 which was an increase of \$1,942 from the previous year's average salary (Figure 4).

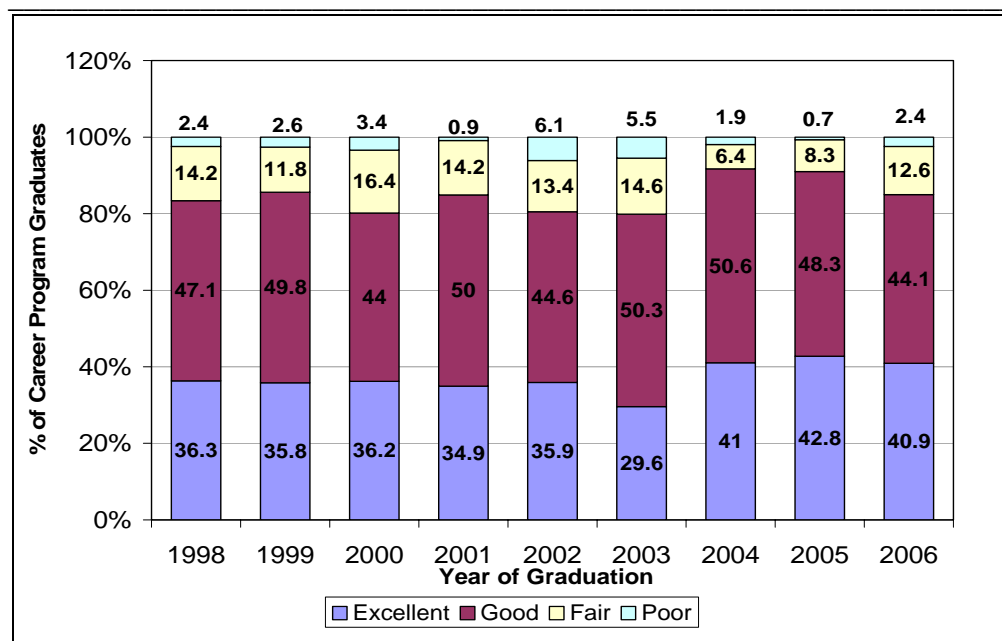
**Figure 4**  
**Annual Salaries of Graduates Working in Full-Time<sup>1</sup> Jobs**  
**1996 – 2006**

Graduation Year	Mean
1996	\$27,534
1997	\$26,402
1998	\$30,592
1999	\$30,980
2000	\$32,189
2001	\$37,923
2002	\$38,903
2003	\$37,103
2004	\$41,203
2005	\$39,923
2006	\$41,865

<sup>1</sup> Full time employment was defined as 30 hours or more per week.

Most graduates value the career preparation they received while at the College. A total of 85% of those who graduated from a career program rated their preparation as either good or excellent. This represents a slight decrease from 2005 graduates (Figure 5).

**Figure 5**  
**Career Program Graduates Assessment of Their CCP**  
**Preparation for the Workplace**  
**1998 – 2006**



**Summary**

Overall, the career outcomes experienced by 2006 career graduates were very positive and exceeded the outcomes of their immediate predecessors. Graduates in 2006 were more likely than 2005 graduates to be employed in a new job that is related to their CCP studies and more likely to have been promoted on the job. Fewer graduates in 2006 were unemployed and actively looking for work at the time of the survey. Most graduates felt the College prepared them well for the demands they encountered in the workforce.