

COMMUNITY COLLEGE OF PHILADELPHIA

*Career Outcomes of 2002 Graduate and
Non-Graduate Former Students*

OFFICE OF INSTITUTIONAL RESEARCH
Report # 135

December 2003

Community College of Philadelphia

Career Outcomes of 2002 Graduates and Non-graduate Former Students

Introduction

The survey of 2002 graduates and non-graduate former students¹ took place from January 2003 through September 2003. The survey questionnaire contained a variety of items related specifically to career outcomes and the following report provides information on the employment-related experiences of graduates and non-graduate former students who participated in the survey. Twenty-seven percent (27%) of graduates responded to the survey and 10.2% of non-graduate former students responded. A parallel report which highlights the transfer experiences of 2002 graduates and non-graduate former students is available on the IR website (<http://inet.ccp.cc.pa.us/VPFIN-PL/ir/>).

Findings

Reasons for Enrollment

In addition to providing results based on all respondents, survey results have been separated throughout this report into two groups (career and transfer) based on respondents' programs of study while at the College. Graduates and non-graduate former students were asked if they enrolled at the College because of potential or actual loss of a job or concerns about future job opportunities in their field of employment. Thirty-seven percent (37%) of the 328 graduates who responded to the survey enrolled because of employment concerns. Non-graduate former students were slightly less likely (30.9%) than graduates to have enrolled because of employment concerns.

¹ Non-graduate former students earned at least 12 credits at CCP and left prior to graduation.

A transfer and career programmatic breakdown of responses to this question related to concerns about future job opportunities is illustrated in Figure 1A and 1B. As expected, graduates who were concerned about future employment prospects were most

likely to enroll in career-related

programs. Forty-five percent

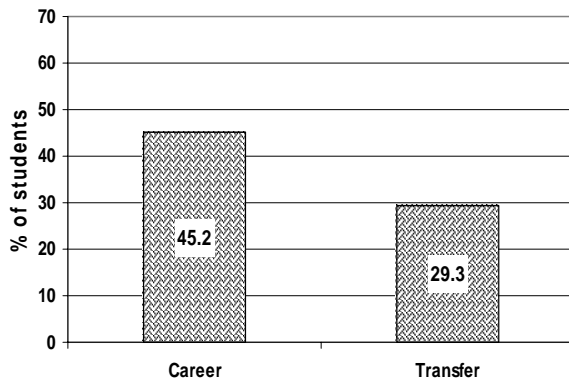
(45.2%) of graduates from

career programs had these

concerns compared to 29.3% of

transfer-program graduates.

FIGURE 1A
2002 Graduates Who Enrolled at the College
Because of Potential / Actual Job Loss



The same pattern was true for the 409 non-graduate former students who participated in the survey. Non-graduate former students who were enrolled in career

programs were more likely

(41.8%) than students enrolled in

transfer programs (26.7%).

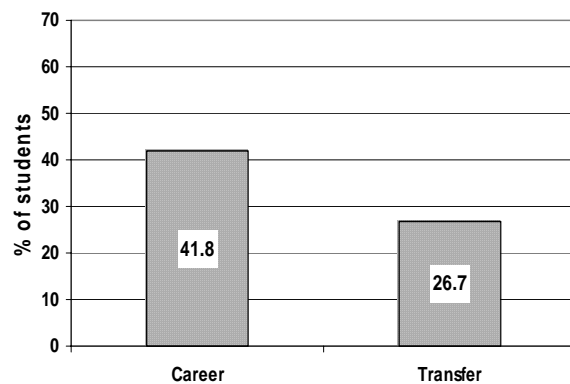
to have enrolled because of

potential or actual loss of a job.

These results are shown in Figure

1B.

FIGURE 1B
Non-graduate Former Students Who Enrolled
at the College Because of
Potential / Actual Job Loss



Present Employment Status

Another survey question asked how employment status had changed since leaving CCP. For all 2002 graduates, 11.7% were working in a new job with the same employer, 31.4% found a new job with a new employer, 50.8% experienced no change in

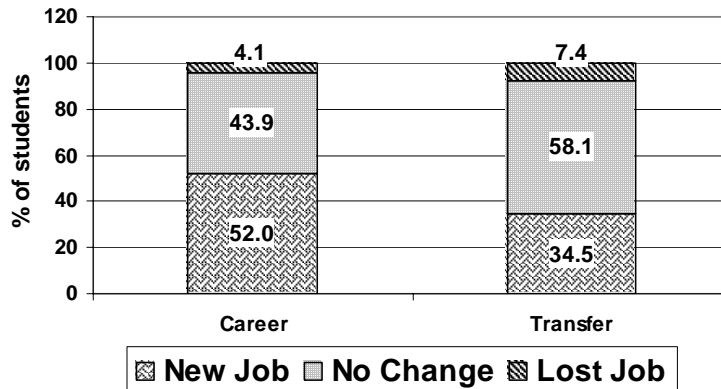
FIGURE 2A
2002 Graduate Employment Status
Since Leaving the College
All Graduates



employment status, and 6.0% indicated they lost their job (Figure 2A). Seventy-six percent (76%) of employed graduates were working in Philadelphia and 93% were working in the Philadelphia metropolitan area. A list of employers appears in Table 1 in the Appendix.

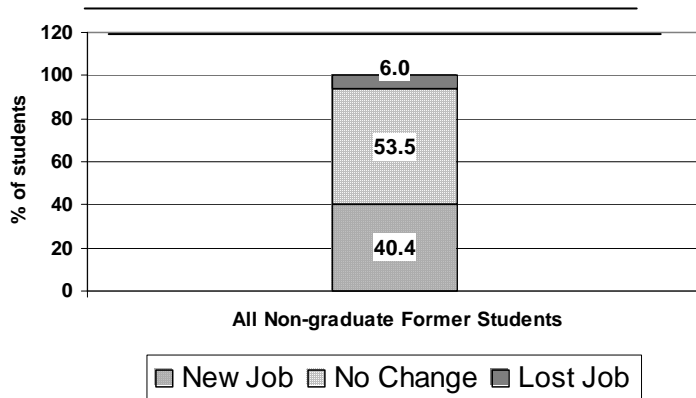
As illustrated in Figure 2B, career-program graduates were more likely (52%) than graduates of transfer programs (34.5%) to have attained a new job, either with a new or their same employer, subsequent to graduation.

FIGURE 2B
2002 Graduate Employment Status
Since Leaving the College
Career VS Transfer Program



The employment profile of non-graduate former students was similar to the graduate profile. Among non-graduate former students, 53.5% indicated no change in employment status, 10.4% were in a new job with the same employer, 30% found a new job with a new employer, and 6.0% experienced job loss (Figure 2C). Sixty-eight percent

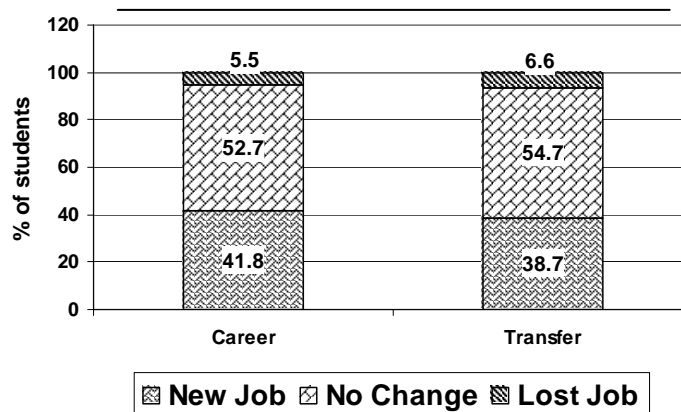
FIGURE 2C
Non-graduate Former Student Employment Status
Since Leaving the College
All Non-Graduate Former Students



(68%) of the College's non-graduate former students were working within the City at the time of the survey and 85.5% were working in the Philadelphia metropolitan area (Table 4). A list of employers for non-graduate former students appears in Table 3 in the appendix.

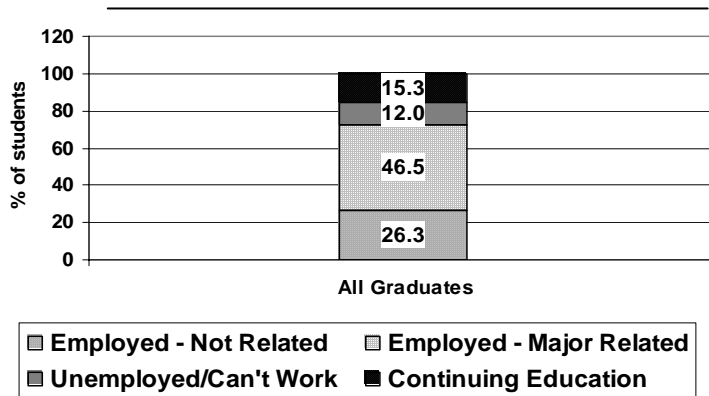
The responses of non-graduate former students who enrolled in career and transfer- programs are shown in Figure 2D. Employment profiles across programmatic areas were fairly similar.

FIGURE 2D
Non-graduate Former Student Employment Status
Since Leaving the College
Career VS Transfer Program



Another career-related item asked respondents to describe their present employment status. Of those 2002 graduates who responded to this item, 46.5% indicated they were employed in a job related to their Community College of Philadelphia studies,

FIGURE 3A
2002 Graduate Present Employment Status
All Graduates

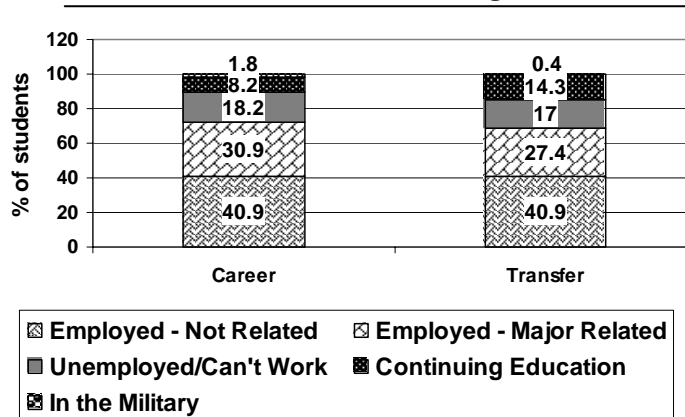


26.3% were employed in a job unrelated to their studies, 15.3% were not employed because they were continuing their education, 8.6% were not employed and sought employment, and 3.4% were

unavailable for employment at the time of the survey (Figure 3A).

Figure 3B presents the responses of graduates from career and transfer programs. Other than transfer program graduates being more likely than career graduates to have continued their education, the two groups were very similar.

FIGURE 3B
2002 Graduate Present Employment Status
Career VS Transfer Program



When non-graduate former students were asked the same question, 29% indicated they were employed in a job related to their Community College of Philadelphia studies, 41.2% were employed in a job unrelated to their CCP studies, 0.8% designated they were in the military, 12.2% were not employed because they were continuing their education, 8.3% were unemployed and sought employment, and 8.5% were unavailable for employment at the time of the survey (Figure 3C).

FIGURE 3C
Non-graduate Former Student Employment Status
All Non-graduate Former Students

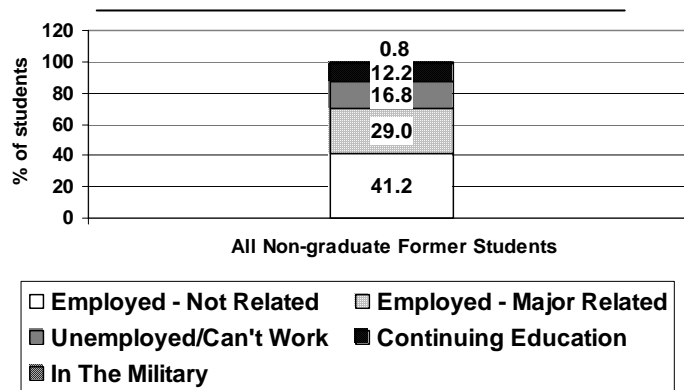
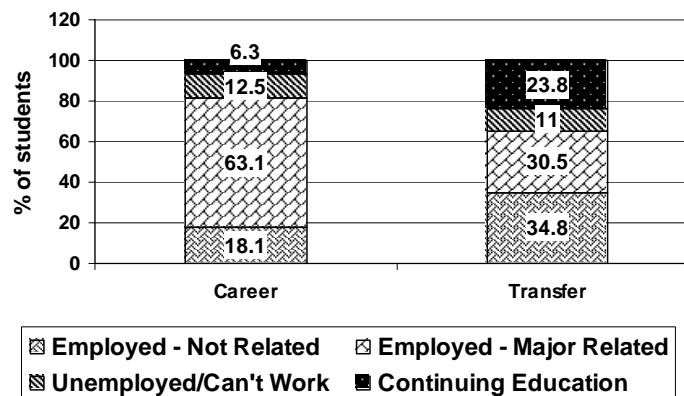


Figure 3D presents the responses of non-graduate former students who were enrolled in career and transfer programs.

FIGURE 3D
Non-graduate Former Student Employment Status
Career VS Transfer Program



Unlike graduates, non-graduate former students in career- programs were twice as likely than transfer non-graduate former students to be employed in a related career and non-graduate former students in transfer-programs were more likely than career program non-graduate former students to have continued their education.

Career program graduates were earning an average annual salary of nearly \$38,904 (Figure 4A), which was higher than the annual salary earned by transfer-program graduates (\$35,062.19)². The opposite salary pattern was true of non-graduate former students. Transfer program non-graduate former students, on average, were earning higher salaries than career-program non-graduate former students (Figure 4B).

FIGURE 4A
Annual Salary of Newly Employed
2002 Graduates

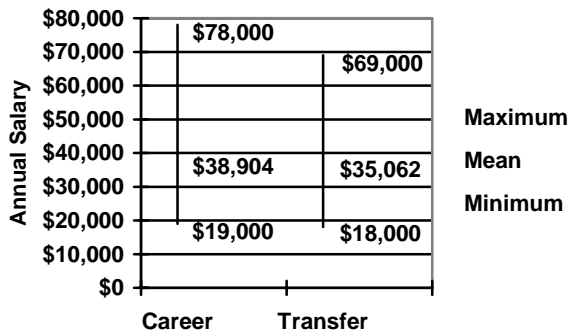
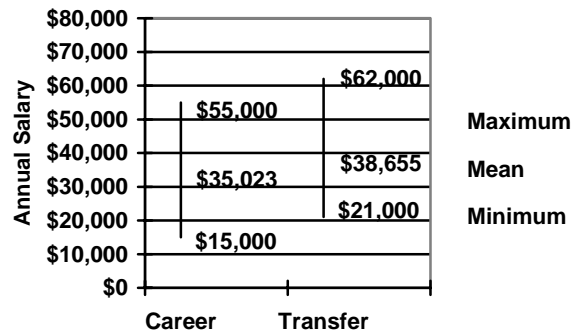


FIGURE 4B
Annual Salary of Newly Employed
Non-graduate Former Students

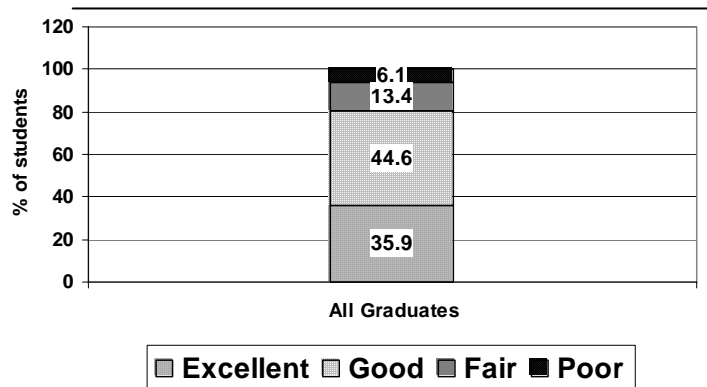


² This summary information was calculated subsequent to excluding an outlier who reported an annual salary of \$250,000. If this value is factored into the summary statistics, the mean salary is \$42,738.54 and the standard deviation is \$42,423.70.

Overall Education Experience

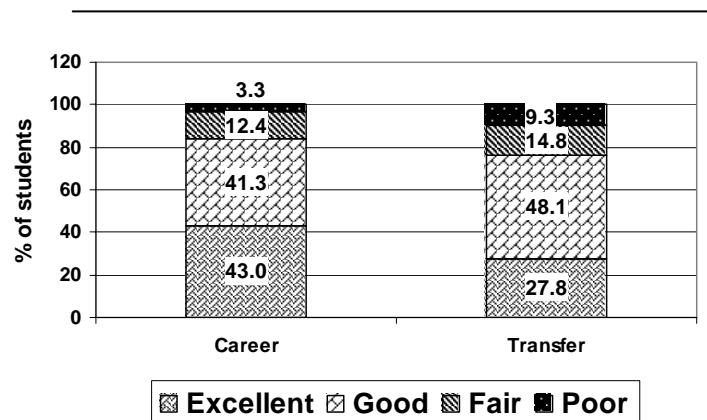
When graduates were asked to rate their overall career preparation at the Community College of Philadelphia, 35.9% rated their experience as excellent, 44.6% rated it as good, 13.4% rated their experience as fair, and only 6.1% rated their overall education experience as poor (Figure 5A).

FIGURE 5A
2002 Graduates' Assessments of Preparation for Job
All Graduates



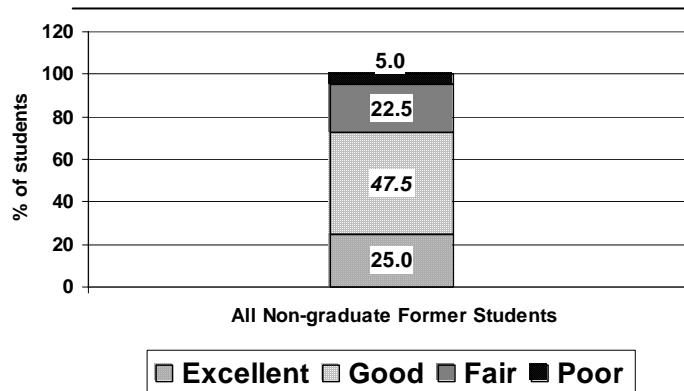
Career program graduates were significantly more satisfied than transfer program graduates with this aspect of their CCP preparation (Figure 5B).

FIGURE 5B
2002 Graduates' Assessments of Preparation for Job
Career VS Transfer Program



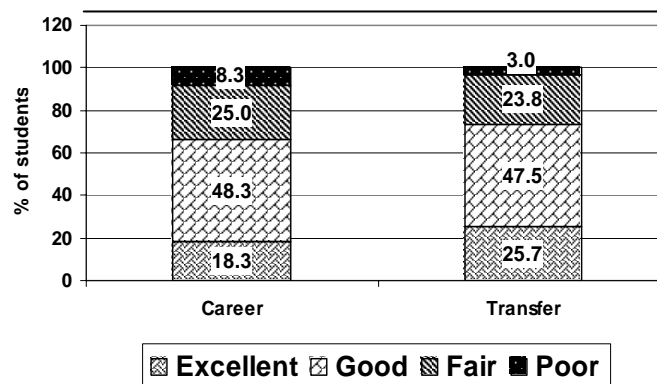
Non-graduate former students were less satisfied with their job preparation than were graduates. Twenty-five percent of non-graduate former students rated their overall career preparation as excellent, 47.5% rated it as good, 22.5% rated as fair, and only 5% rated their overall education experience as poor (Figure 5C).

FIGURE 5C
Non-graduate Former Students'
Assessments of Preparation for Job
All Non-graduate Former Students



Non-graduate former transfer students were slightly more positive than career students in this assessment of CCP (Figure 5D).

FIGURE 5D
Non-graduate Former Students'
Assessments of Preparation for Job
Career VS Transfer Program



Summary

In general, graduates experienced slightly more positive career outcomes than non-graduate former students. Thirty-seven percent (37%) of graduates enrolled because of concerns about future employment prospects. After receiving their degree at the Community College of Philadelphia, 43.1% of graduates had a new job with the same employer or a job with a new employer. While 30.9% of non-graduate former students enrolled because of employment concerns, 40.4% attained a new job with the same employer or a job with a new employer at the time of the survey.

Graduates were significantly more likely to be employed in positions related to their studies. Forty-seven percent (46.5%) were employed in a job related to their programs compared to 29% of non-graduate former students.

Most students were pleased with the way the College prepared them for their jobs. Over eighty percent (80%) of graduates rated their College experience as excellent or good, while 72.5% of non-graduate former students rated the College as such.

The great majority of graduate and non-graduate former students are employed within the Philadelphia metropolitan area. As shown in the Appendix Tables, the employers are diverse and there are very few employers that employ a significant number of graduates or non-graduate former students.

APPENDIX

TABLE 1: Name of Graduates' Employers

Employer Industry	Employer	# Graduates Reporting
Health Care	AETNA	1
	American Board of Internal Medicine	1
	Bayada Nurses	1
	Crozer Chester Medical Center	1
	Dental Office	1
	Einstein Medical Center	1
	Fletcher Allen Healthcare	1
	Frankford Hospital	2
	Goldman Clinic	1
	Healthcare Services	1
	Holcomb Behavioral Health	1
	Holy Redeemer	1
	Independence Blue Cross	1
	Jeans Hospital	1
	Jefferson Health Systems	1
	MCP Hahnemann Hospital	5
	Mental Health Association	1
	Mercy Hospital	2
	Methodist Hospital	1
	Miller/Boselli Internal Medicine	1
	Montgomery Hospital	1
	Pennsylvania Hospital	1
	Philadelphia Mental Health	1
	Physician's Offices	2
	Presbyterian Medical center	1
	St. Christopher's Hospital	2
	St. Vincent's	1
	Temple Hospital	1
Thomas Jefferson University Hospital	8	
Tenet Health - Parkview Hospital	1	
UPHS Health System	1	
Venneri Dental	1	
Education	Cherry Hill Public School	1
	Community College of Philadelphia	4
	Hahnemann Financial Aid Office	1
	Head Start	1
	Ivy Leaf School	1
	MSRC in Temple University	1
	School District of Philadelphia	3
	Temple University	2
	Thomas Jefferson University	2
	University of Pennsylvania	1
	West Oak Lane Christian Academy	1
Public Administration	City of Philadelphia	3
	City of Philadelphia (Fire Department)	4
	City of Philadelphia Dept. of Rev.	1
	Dept of Vet Affairs	1

	Internal Revenue Service	1
	PGW	1
	Philadelphia Police Department	2
	US Court of Appeals	1
Retail	Barnes & Nobles	1
	Bookbinders 15th St.	1
	GAP	1
	Home Depot	2
	Lord & Taylor	1
	Mineralistic	1
	Sears	1
	ShopRite	1
	Staples	1
Social Services	Chapel Manor Nursing Home	1
	Children's Aid Society	1
	Community Treatment Team	1
	Gaudenzia Inc.	1
	Horizon House	2
	Lamott Children Center	1
	Little Friends Day Care	1
	Liveagain Foundation, Inc.	1
	NSA childhood center	1
	Phila Service Center	1
	Philadelphia Parent Child Center	1
	Project Home	1
	The Parent Infant Center	1
	Youth Services Inc.	1
Hospitality	Aramark Corporation	2
	Burger King	1
	Charlie's Tavern	1
	Houlihan's	1
	Rittenhouse Hotel	1
	Starwood Hotels	1
	Woods Services	1
Financial Services	Accountemps	1
	Beneficial Saving Bank	1
	Commerce Bank	1
	First Union Bank	2
	Firsttrust Bank	1
	Hudson United Bank	1
	PC Mortgage	1
	Pricewaterhouse Coopers	1
	Prudential	2
	Wachovia	1
	Wells Fargo Financial	1
Correctional	Federal Bureau of Prisons	1
Law	Law Offices	2
Transportation	Amtrak	1
	Leahy Bus Company	1
	RHP Transportation	1
	SEPTA	1
Other	Alta Communications	1
	Amer[?] Solutions	1

Other (cont.)	Arbor Management	1
	Archdiocese of Philadelphia	1
	Archer & Greiner	1
	Ask Plastics	1
	Atkins & Cohen	1
	Billy Love	1
	Brunswick Recreations	1
	BSB	1
	C.E.C.	1
	CDI Corp.	1
	Chanpanges	1
	Cigna	1
	Comcast	1
	Confidential	1
	Consortium	1
	Corestaff, Inc.	1
	Cradle of Liberty, Council BSA	1
	Dalumbo Rec Center	1
	DeHa-T	1
	DLR Group	1
	Echostar	1
	Elwyn, Inc.	2
	Equipment Systems and Devices	1
	Farm & Natural Lands Trust	1
	FBCS, Inc.	1
	Federman & Phelan, LLP	1
	Feed Your Eyes	1
	Figs/Devon	1
	Freedom Village	1
	Hope Worldwide	1
	Hopkins Center	1
	Jewish Exponent	1
	Kirkbride Center	1
	Magnus Research	1
	McCabe Weisberg & Conway	2
	Meissner Chevy & Olds	1
	Metro One Telecom	1
	Morgan Lewis and Beckius	1
	Mother Works	1
	Norman Company	1
	Office Team	1
	OFP	1
	P/F/A	1
	Parkway Corporation	1
	PATH	2
	Perfuseal & CCP	1
	Philadelphia Park	1
Powell Funeral Home	1	
Quest Diagnostic	1	
Quint Company	1	
Reed Technology	1	
ReMax	1	
Ridgeway Philips	1	

Other (con't)	RSL	1
	Self-employed	5
	Self Help Mov. Inc.	2
	Sirous Jamshidi	1
	Southern Co.	1
	Sparks Exhibits	1
	Step by Step	2
	Taber Services	1
	Temp Solutions	1
	Tot-Time/ Time or Tots	1
	Tuny Haven Int'l	1
	Universal Companies	2
	UPS	1
	USPS	1
	William F. Joseph, LLL	1
	Wisher Institute	1
Wolf Block	1	

TABLE 2: Graduates' Employment Area

Employer Location		# Graduates Reporting	Percent	# Graduates Reporting	Percent
Philadelphia	Center City	36	21.2	129	75.9
	South Philadelphia	8	4.7		
	South West Philadelphia	3	1.8		
	West Philadelphia	15	8.8		
	Lower North Philadelphia	18	10.6		
	Upper North Philadelphia	7	4.1		
	Kensington, Richmond, Bridesburg	5	2.9		
	Roxborough, Manayunk	1	0.6		
	Germantown, Chestnut Hill	5	2.9		
	Oak Lane, Olney	2	1.2		
	Near Northeast	19	11.2		
	Far Northeast	10	5.9		
Not Philadelphia but metro area		29	17.1	29	17.1
Not Philadelphia area but Pennsylvania		4	2.4	4	2.4
Not Pennsylvania		8	4.7	8	4.7
Total		170	100.0	170	100.0

TABLE 3: Name of Non-graduate Former Students' Employers

Employer Industry	Employer	# Graduates Reporting
Health Care	Abington Memorial Hospital	1
	Albert Einstein Medical Center	3
	Bayada Nurses – Marie Brown Sup.	1
	Agency Nursing	1
	Blue Cross	1
	Capital Health System	1
	Children's Hospital of Philadelphia	2
	Fornance Physician Services	1
	Friends Hospital	1
	Genesis Select Care	1
	Graduate Hospital	1
	Hahnemann Hospital	2
	Home Health Care	1
	Hospital of the University of Pennsylvania	1
	Jeanes Hospital	1
	Jefferson Hospital	1
	Kensington Hospital	1
	Magee Rehab Hospital	1
	Med Immune Inc	2
	MedStaff, Inc.	1
	Methodist Hospital	3
	Morehead Hospital	1
	Nazareth Hospital	1
	Oxford Valley Diagnostic Center	1
	PCI / Cardinal Health	1
	Pennsylvania Hospital	1
	Private Duty rehab work	1
	St Joseph Hospital	1
St. Mary Med. Center	1	
Temple University Hospital	1	
Wedge Medical Center	1	
Education	Carson Valley School	1
	Hahnemann Univ	1
	John Pancott Gymnastics Center	1
	LaSalle University	1
	Our Lady of Victory	1
	School District of Philadelphia	2
	St. Anne's School	1
	Temple University	1
	Village of Arts & Humanities	1
	Young Scholar Charter School	1
Public Administration	Air Management Services, City of Philadelphia	1
	Board of Revision of Taxes	1
	Bucks County	1
	City Hall Prothonotery	1
	City of Philadelphia	7
	DPW - Dept of Public Welfare	1
	Philadelphia Fire Dept.	1
	Phila Health Mgt Corp.	1

	Social Security Admin	3
	US Census Bureau	1
	United States Postal Service	2
	USDA	1
Retail	A&P	1
	Best Buy	1
	Cingular	1
	Craftmatic	1
	CVS	1
	DebShops, Inc	1
	Home Depot	1
	Kidz Shouz	1
	M+B Auto Supply	1
	Macy's	1
	Old Navy	1
	Rite Aid	1
	Sears	2
	Stanley's True Value Inc. - hardware	1
Suburban Pharmacy	1	
Social Services	Caring People Alliance @ West	1
	Child Advocates	1
	Child Welfare	1
	Gaudenzia, Inc.	1
	Horizon House	2
	Little Folks Care Center	1
	Philadelphia Nursing Home	2
	Presbyterian Childrens Village	1
Hospitality	Dave & Busters	1
	Inn Flight Restaurant	1
	McDonald's	1
	Resaturant Associates	1
	Silkcity Diner	1
	The Buck Hotel	1
	The Gourmet Vendor, Inc	1
	Vasalos Pizza	1
	USI Diner	1
Financial Services	CIGNA	2
	Cigna Tel drug	1
	First Union	2
	Liberty Mutual Ins.	1
	Magellan	1
	Penn Mutual	1
	Rampart Holdings Corp	1
Correctional	Philadelphia Prisons	1
Law	Best Legal Services	1
	Blark + Gerngross	1
	Law firm	1
	Morris Zuber Esquire	1
Transportation	Admiral Limousine	1
	American Trans Air	1
	Fedex Ground	1
	SEPTA	1
Realty	Eichler + Moffly RE	1

	John Matthew GMac Realtors	1
	Lancaster Properties	1
Military Services	US Army	1
	US Coast Guard	1
	US Marines	1
Other	2 jobs: Becker Temp Srv; Art Museum, Phila	1
	A Charming World	1
	ACE-INA	1
	Ace Visa	1
	Acts	1
	AEMC	2
	ALD Guard House Inn	1
	Allied Security	1
	Alstom	1
	Amerada Hess	1
	Architectural Firm	1
	Bethesda Project	1
	Boreata	1
	Boys	1
	C. Campbells Kids Inc.	1
	C.A.R.I.E.	1
	Carescience	1
	Cathedral Village	1
	Cintas	1
	CIS	1
	CMS Companies	1
	CMS: River's Bend	1
	Cornell Abraxas	1
	DDL	1
	Delaware River Stevedores	1
	Dominican Retreat HS	1
	DPD	1
	E- researach	1
	Elwyn Institute	1
	Federman + Phelar	1
	Giles & Ransome	1
	Independent job - Contractor for DHCC	1
	Johnson & Johnson	1
	MELC	1
	MRI Flexible Packaging	1
	MTV Networks	1
	Naval Dept	1
	NAVICF	1
	NAVICP Phila PA	1
	OOMC	1
	OSRA	1
	Personal Touch	1
	Phila Phillies	1
Pidney Bower Service	1	
PLCB	1	
Radion Group	1	
Ratner	1	
Roofers Local 30	1	

Other (con't)	Self-employed	2
	Shaw and Roseman, P.C.	1
	SMS	1
	Spirit & Truth Church	1
	Spring House Estate	1
	St.Mary Manor	1
	Steam Fitters Union	1
	T.A.I.G.	1
	trans union	1
	UARTS	1
	Uniscribe	1
	USA Special Risk	3
	VAROIC	1

TABLE 4: Non-graduate Former Students' Employment Area

Employer Location		# Graduates Reporting	Percent	# Graduates Reporting	Percent
Philadelphia	Center City	34	21.5	108	68.4
	South Philadelphia	6	3.8		
	South West Philadelphia	3	1.9		
	West Philadelphia	9	5.7		
	Lower North Philadelphia	11	7.0		
	Upper North Philadelphia	4	2.5		
	Kensington, Richmond, Bridesburg	1	0.6		
	Roxborough, Manayunk	3	1.9		
	Germantown, Chestnut Hill	8	5.1		
	Oak Lane, Olney	6	3.8		
	Near Northeast	11	7.0		
	Far Northeast	12	7.6		
Not Philadelphia but metro area		27	17.1	27	17.1
Not Philadelphia area but Pennsylvania		9	5.7	9	5.7
Not Pennsylvania		14	8.9	14	8.9
Total		158	100.0	158	100.0