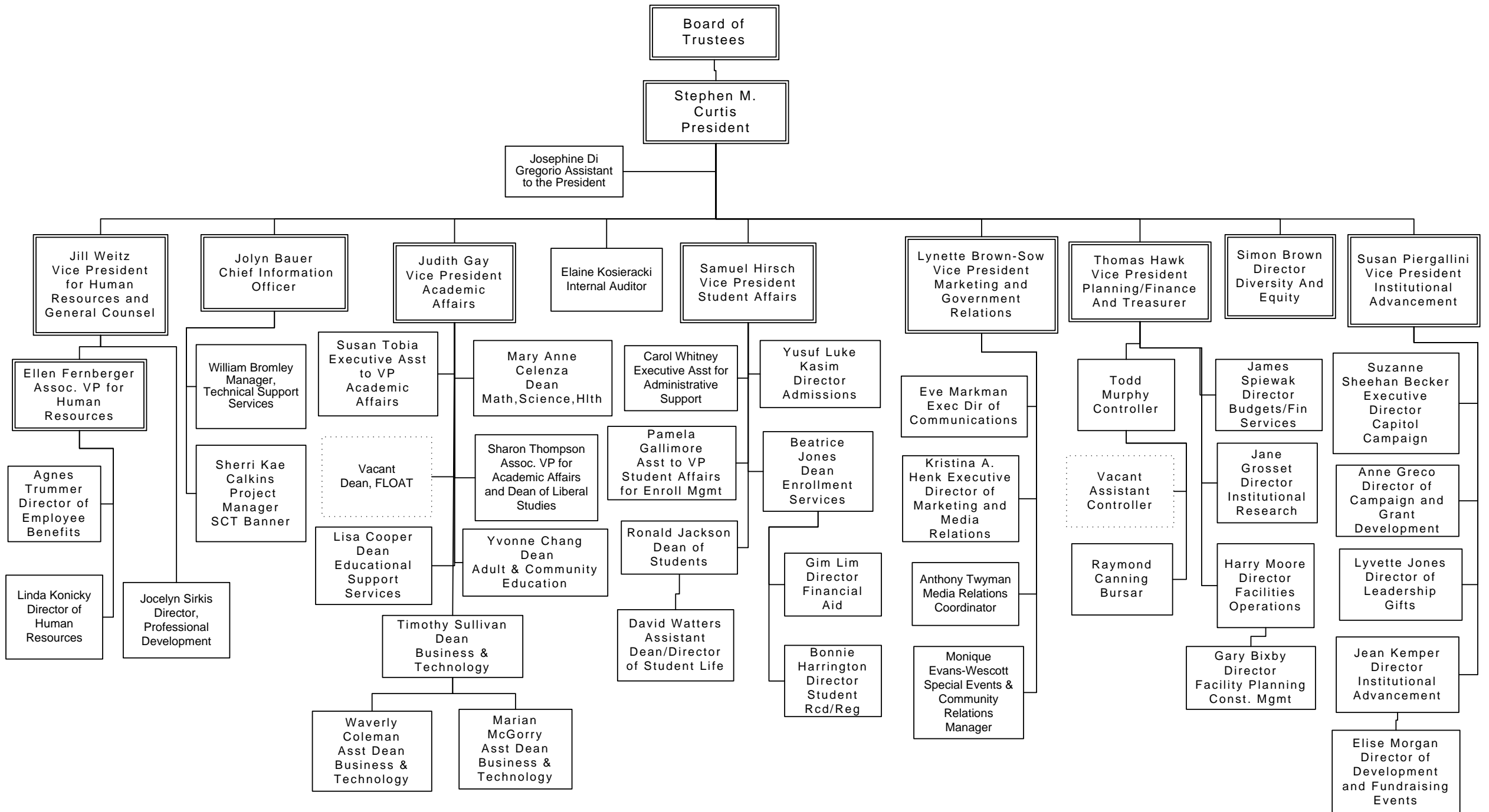
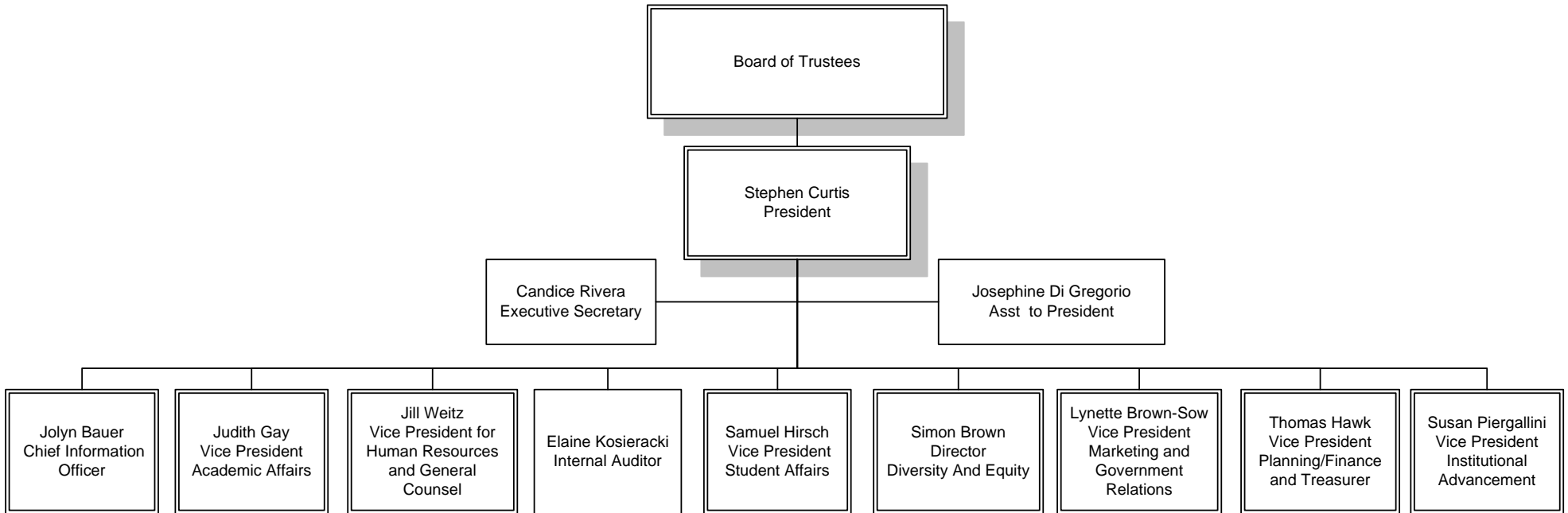


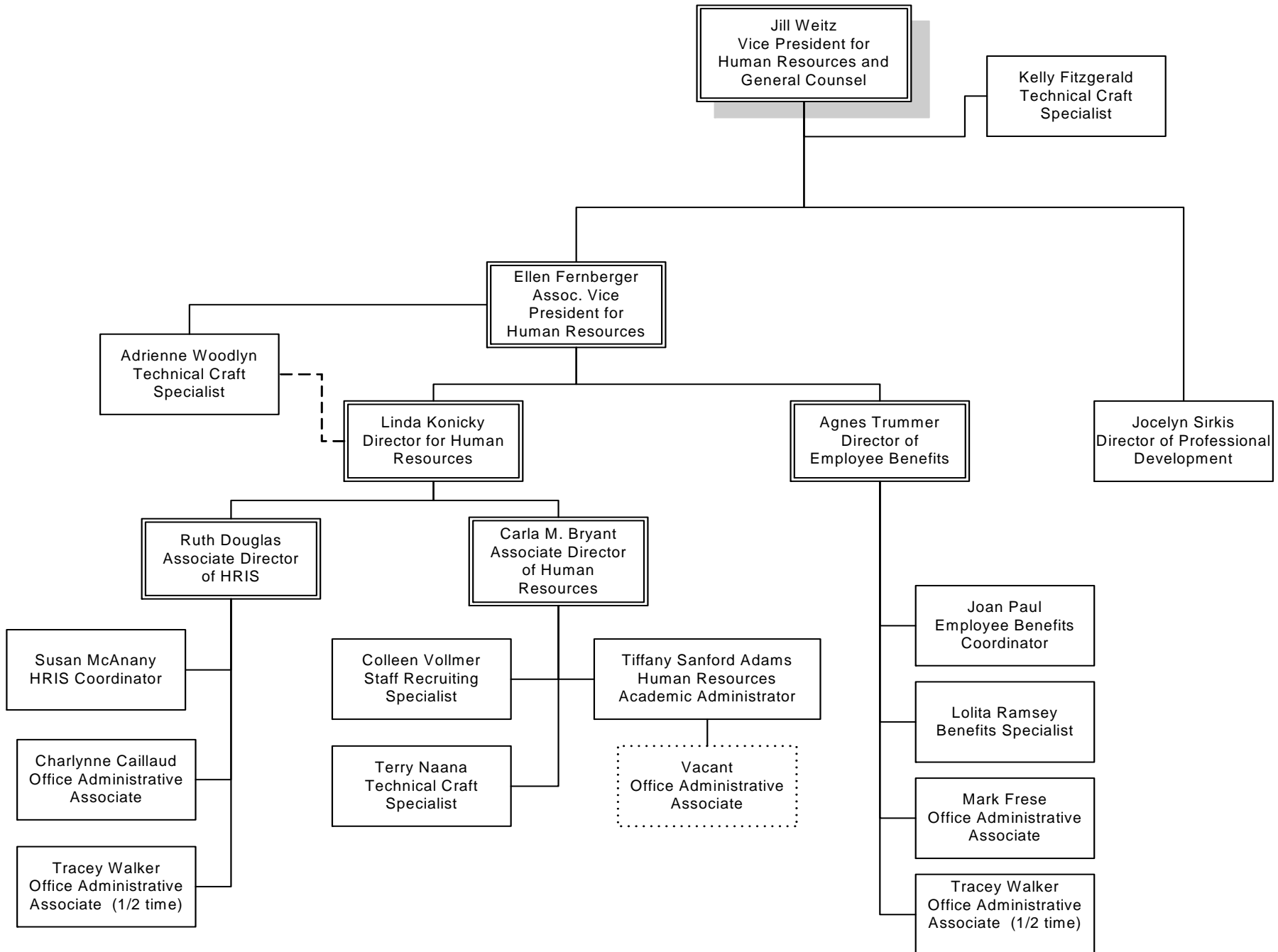
COMMUNITY COLLEGE OF PHILADELPHIA - ADMINISTRATIVE ORGANIZATIONAL CHART



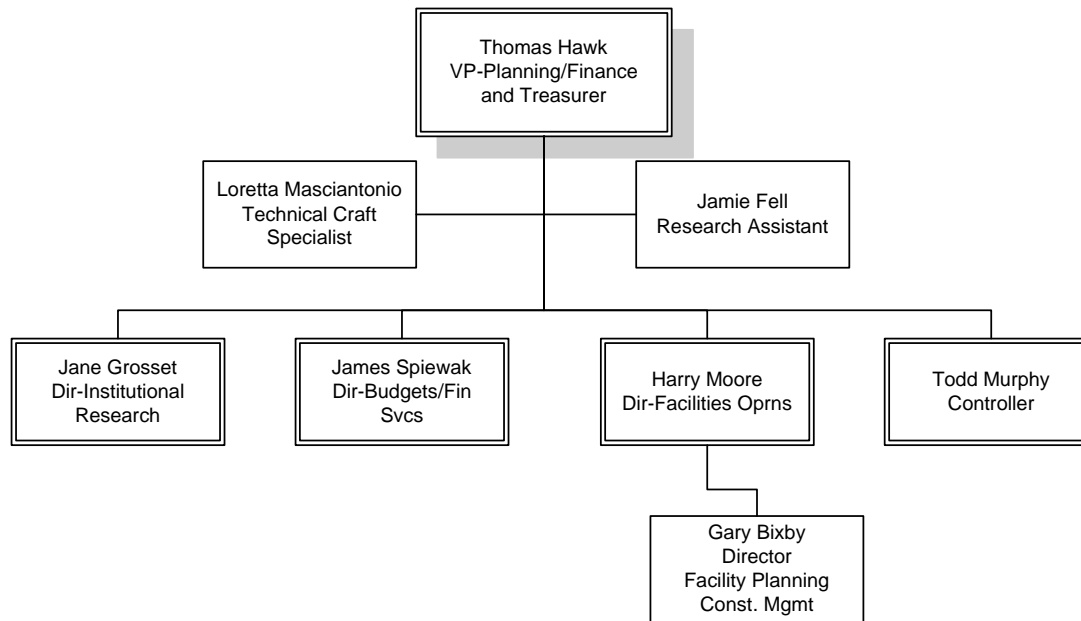
PRESIDENT'S OFFICE



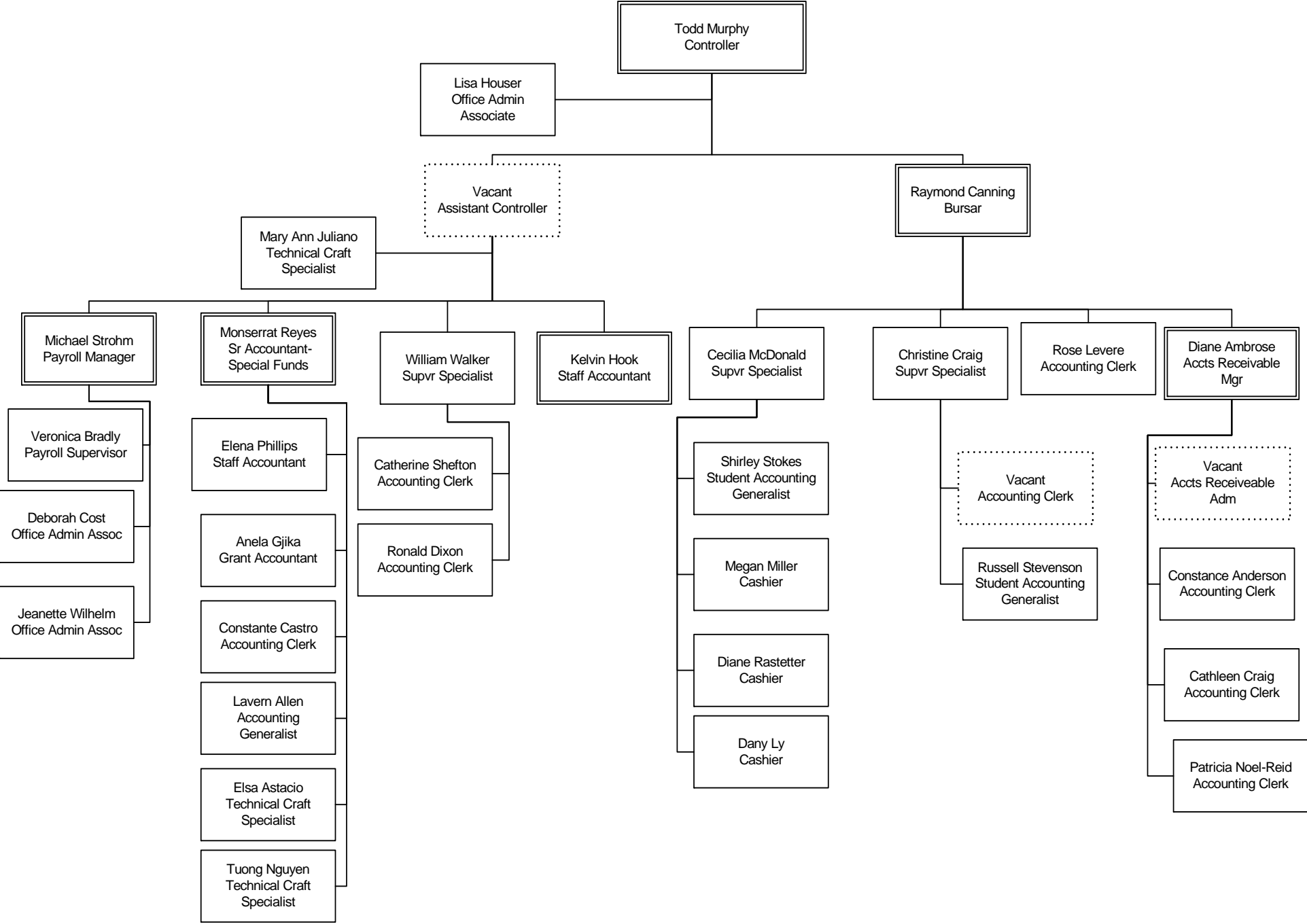
HUMAN RESOURCES AND GENERAL COUNSEL



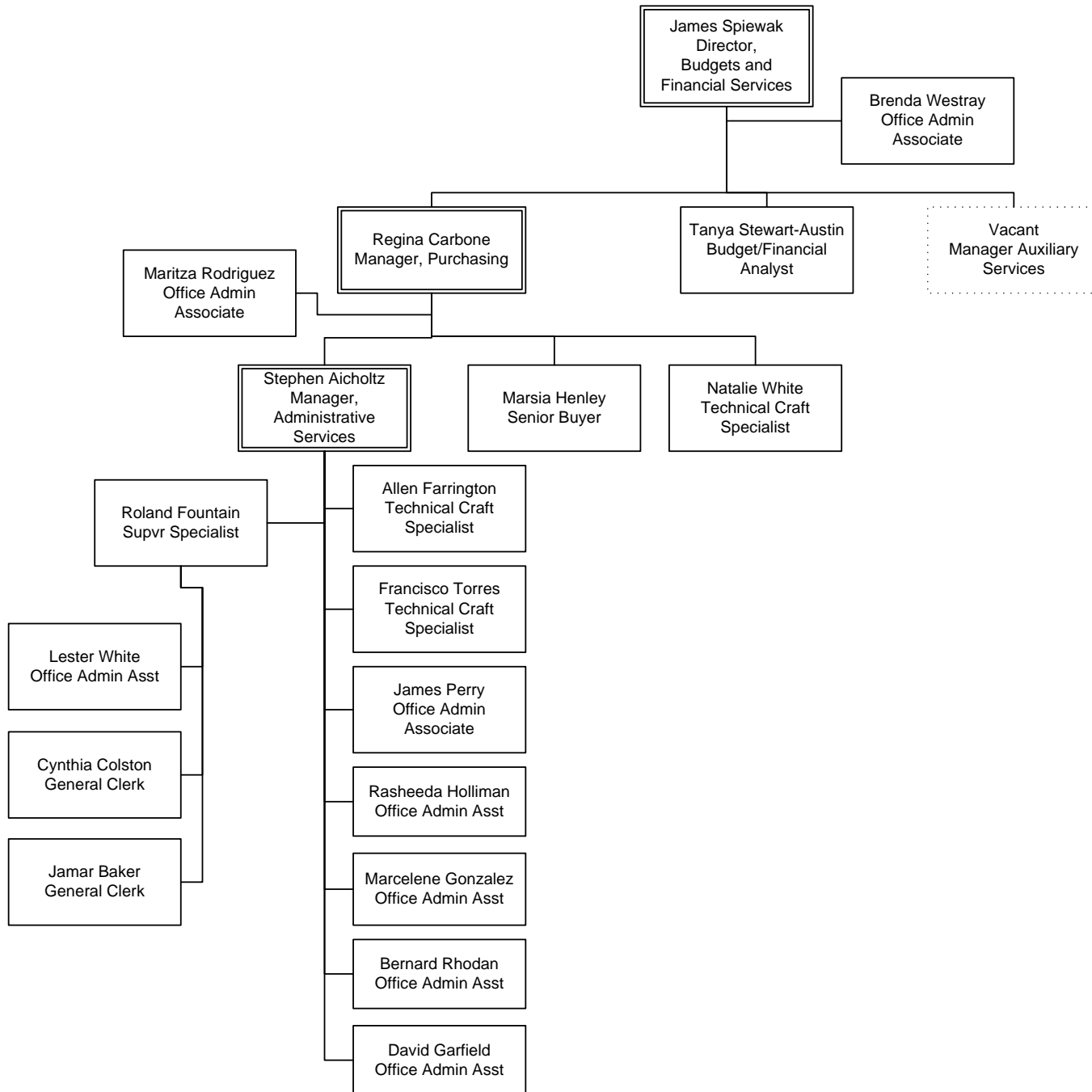
PLANNING AND FINANCE



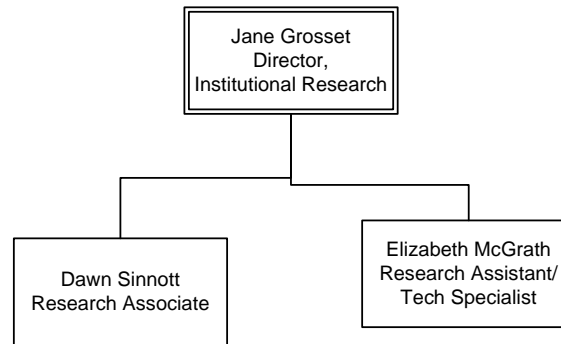
CONTROLLER



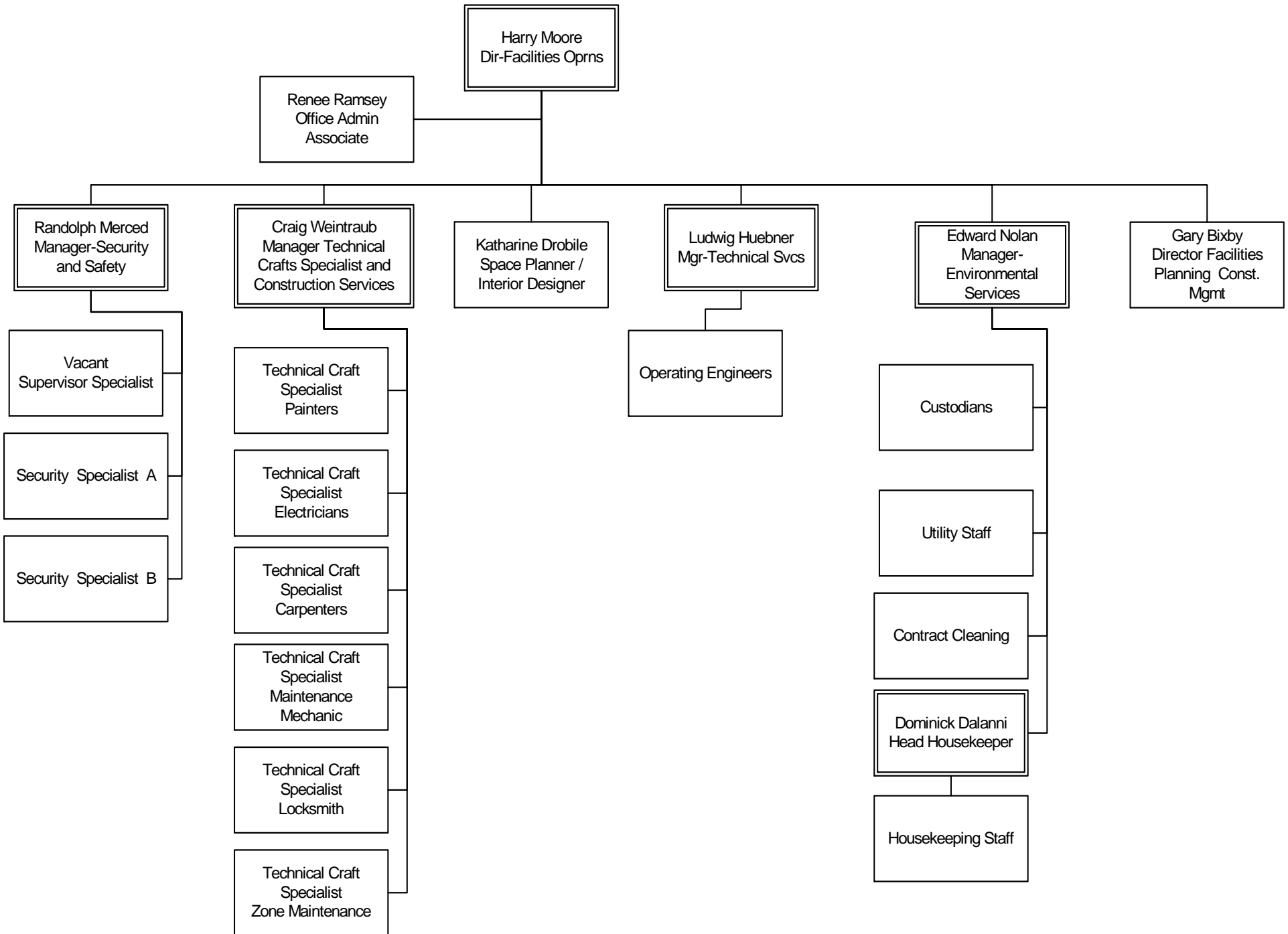
BUDGETS AND FINANCIAL SERVICES



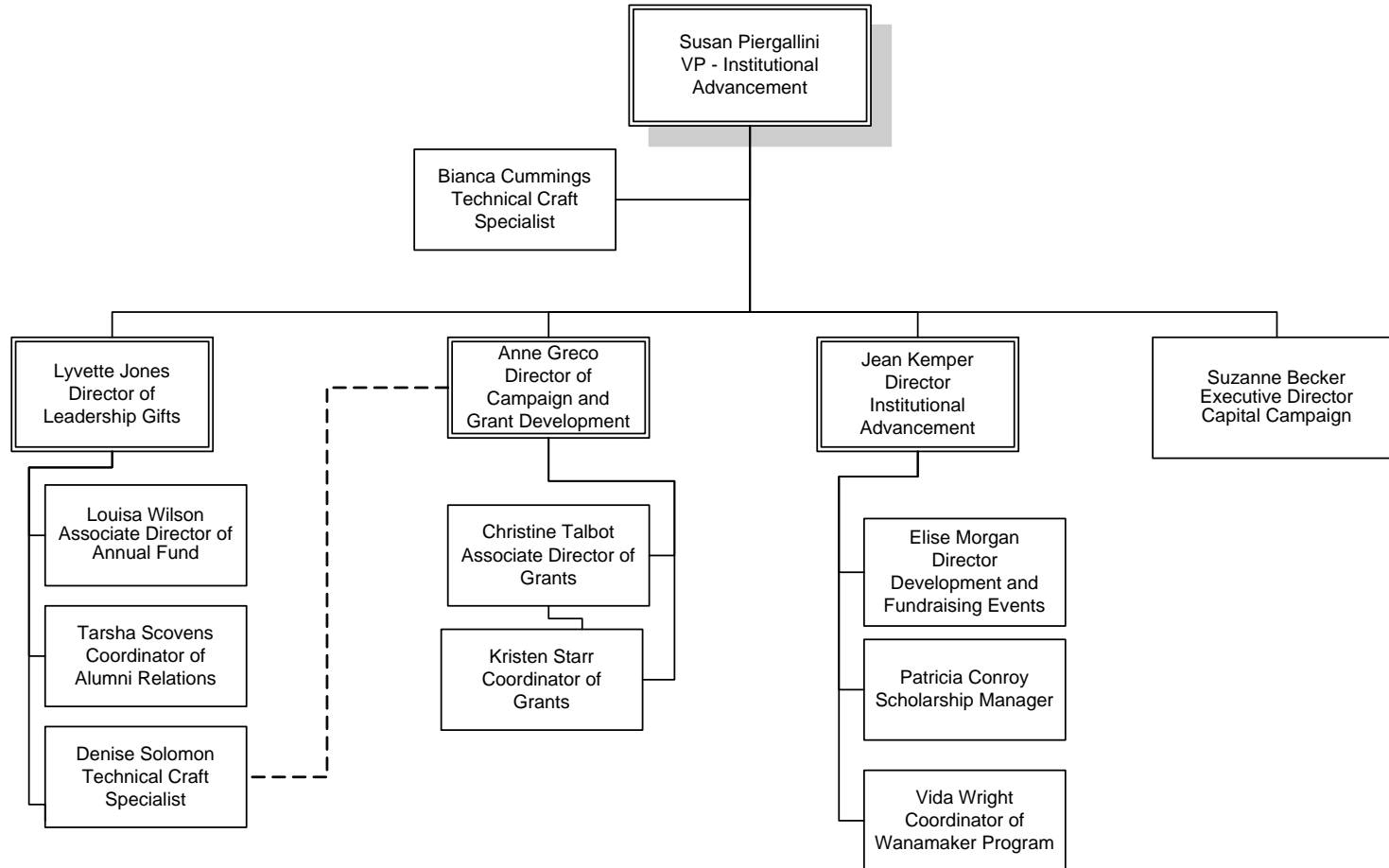
INSTITUTIONAL RESEARCH



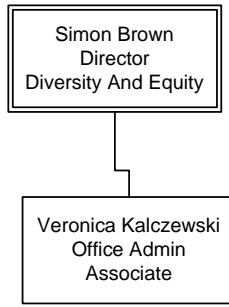
FACILITIES OPERATIONS



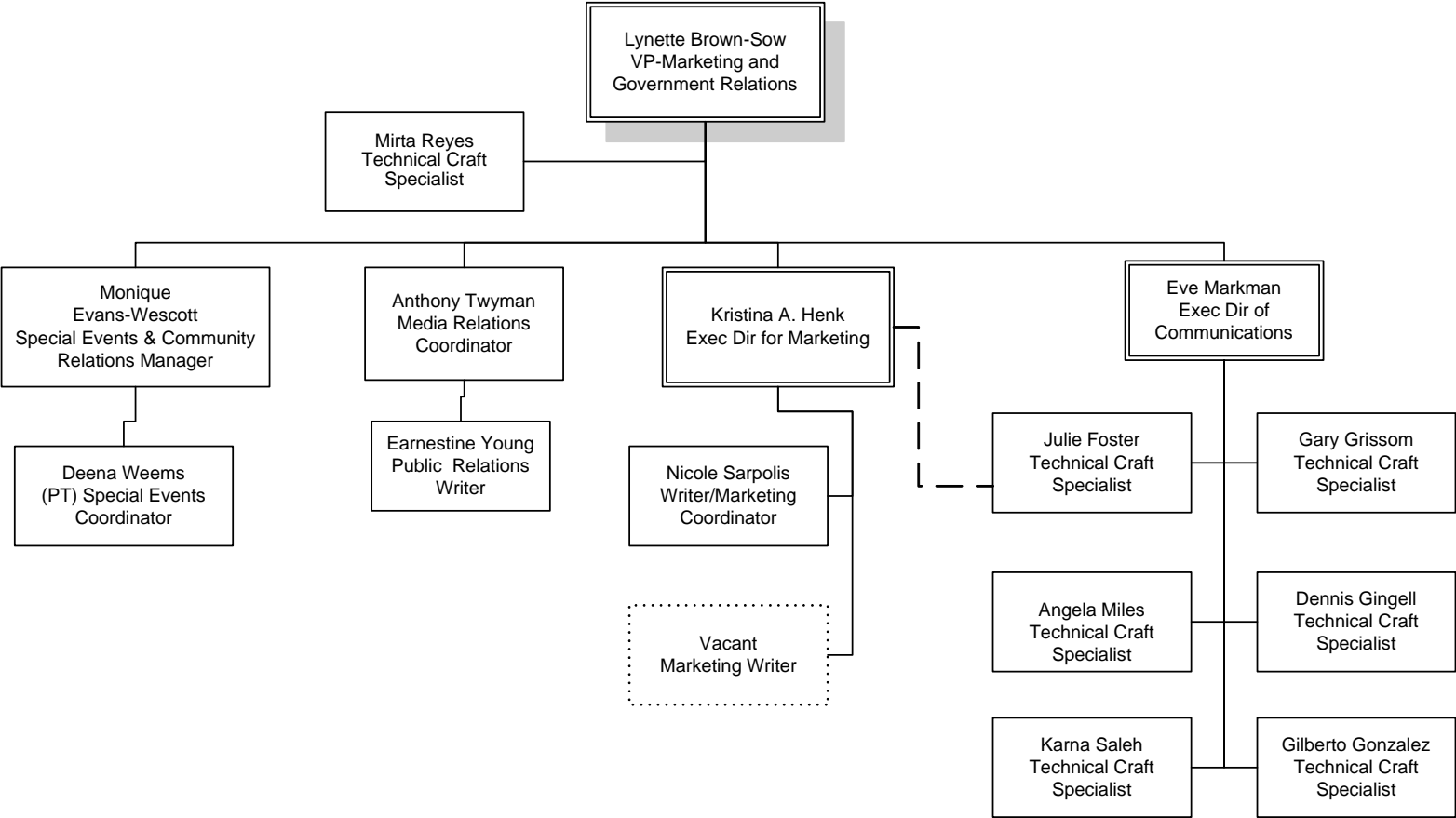
INSTITUTIONAL ADVANCEMENT



DIVERSITY AND EQUITY OFFICE



**OFFICE OF MARKETING AND GOVERNMENT
RELATIONS**



**Information Technology Services
2009**

Jolyn Bauer
Chief Information Officer

Denise Sanders
Technical Craft
Specialist

Patricia Strother
Office Admin Associate

**William Bromley
Project Manager
Technical Support Services**

**SK Calkins
Project Manager
Information Support Services**

Patrice Ramsey
Systems Analyst

Patrick DiCrecchio
Desktop Support
Supervisor

Vacant
Application Development
and Administration
Manager

Julie Simmons
Client Education
Training
Coordinator

Betty Cannon
Client Support
Manager

Network Support
Engineers

Ferdinand
Talabis
Edward Crosbee
Stephen Dorsey
David Lee
Dennis
Ostopowicz

Email
Administrator
Donna Aviles

Desk side / Help Desk Support

Aristidis Bekas
Clarence Kennedy
Eric Massenburg
Timothy Mullane
Mitchell Ostaszewski
Douglas Wong
Frank Crean
Frank Groff
Todd Bracy

System Coordinators
Ed Ebner
Elizabeth Giampietro
Jerome Phillips
Joe Polich

Application Development
Robert Conrad
Vacant
Dennis Lyons
Linda Rollo
Attilio Gatto
Michael Cheeseman
Akiyah Baugh
Vacant

Student System Analysts
Cindy Dorfman
Vacant
Robert Pittenger
Elizabeth Bahm

Rose Mikstas
Student Helpdesk
Production Support
Specialist

Network Support

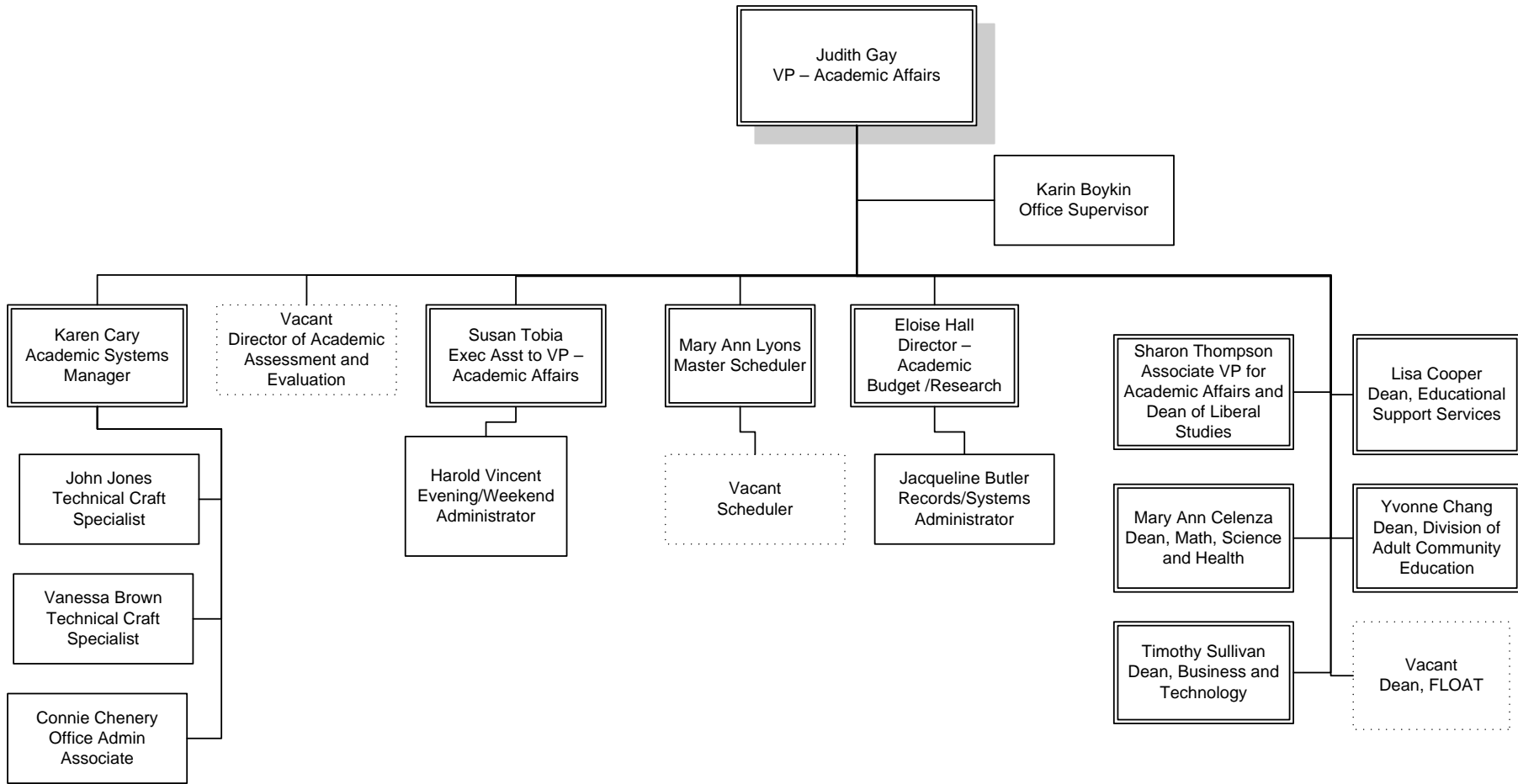
Desk side / Help Desk Support

Application Development and
Administration

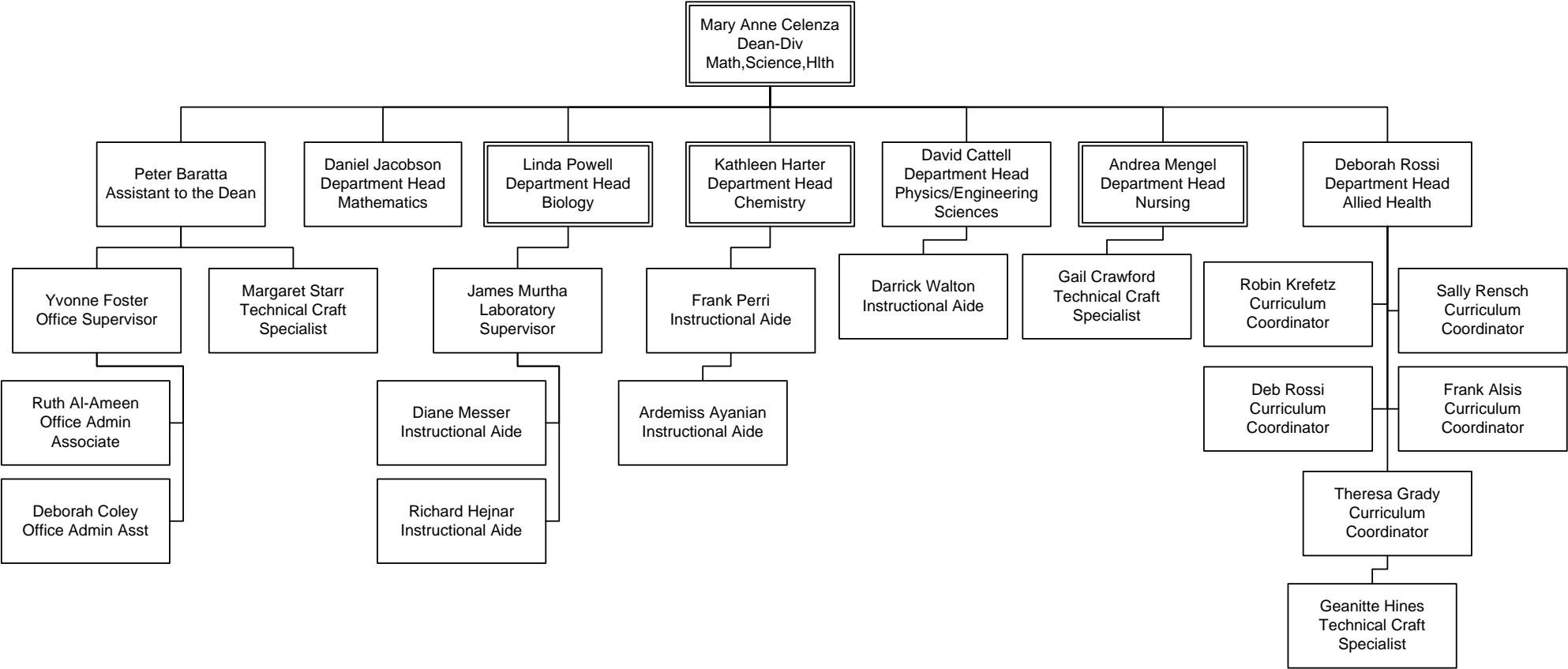
Client Education and Information
Support

Technical Support Services (TSS)

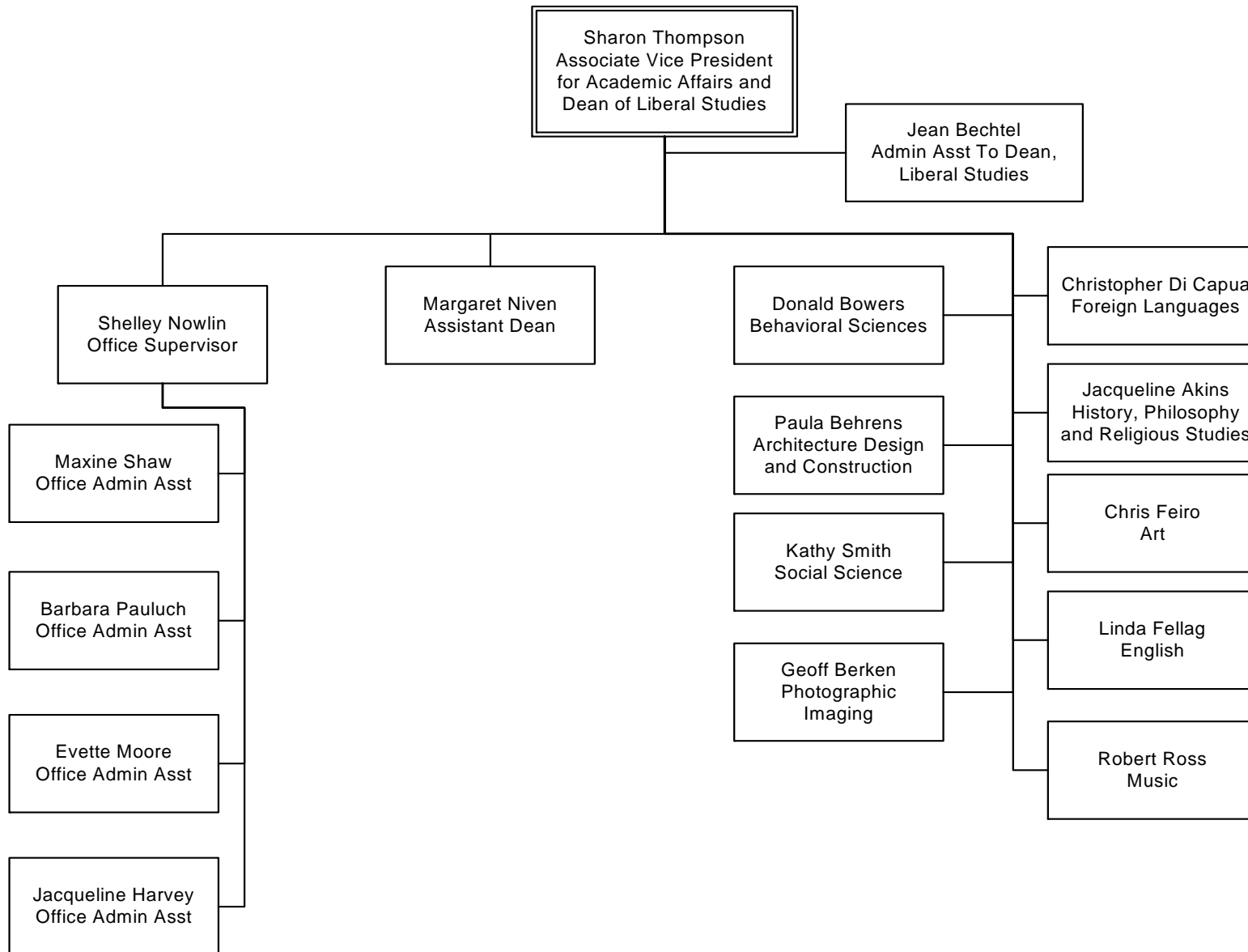
Information Support Services (ISS)



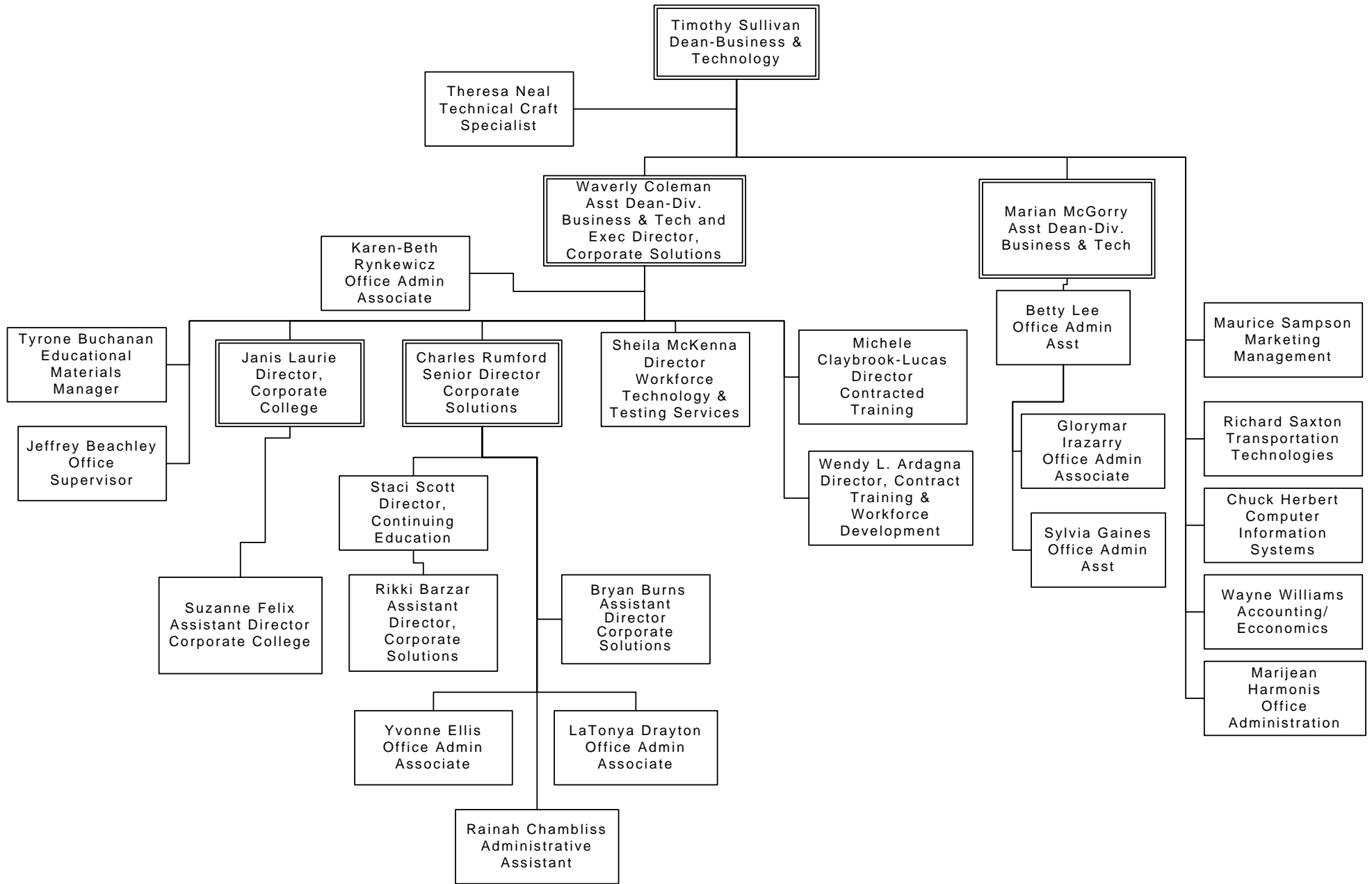
MATH, SCIENCE AND HEALTH CAREERS



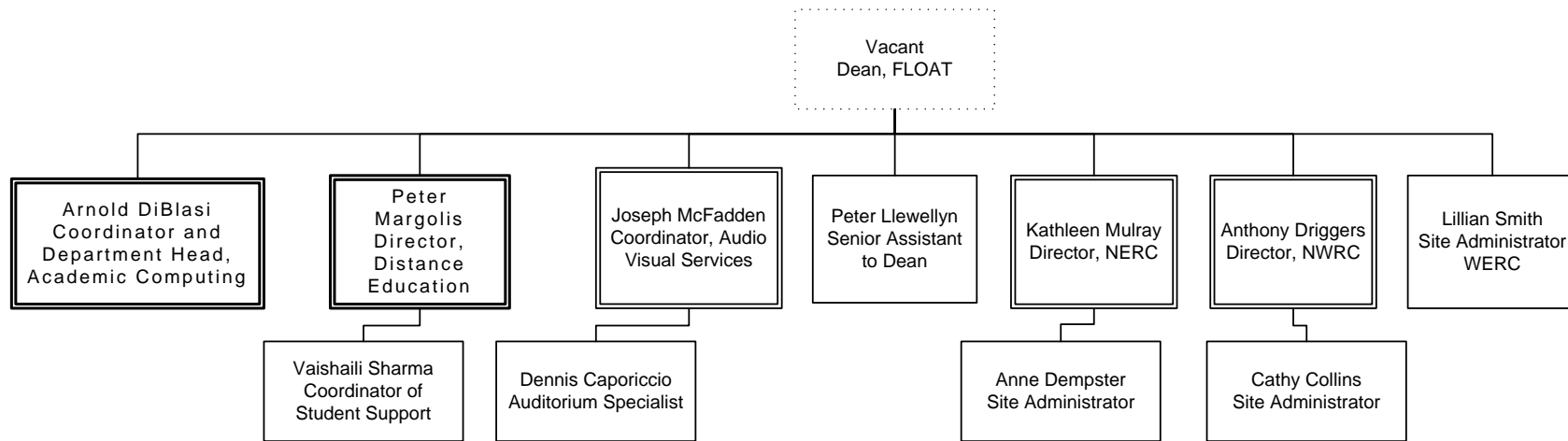
LIBERAL STUDIES



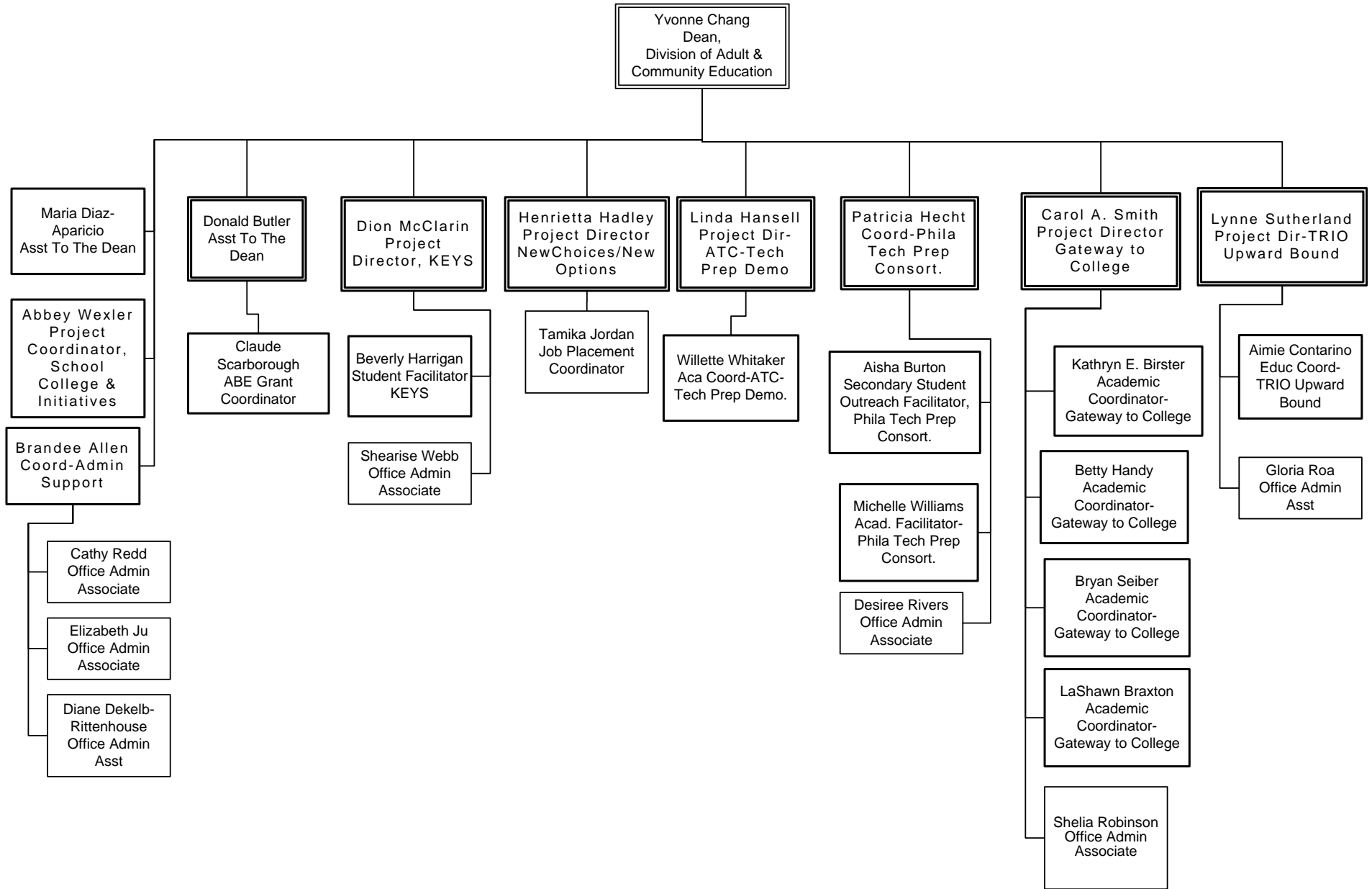
BUSINESS AND TECHNOLOGY



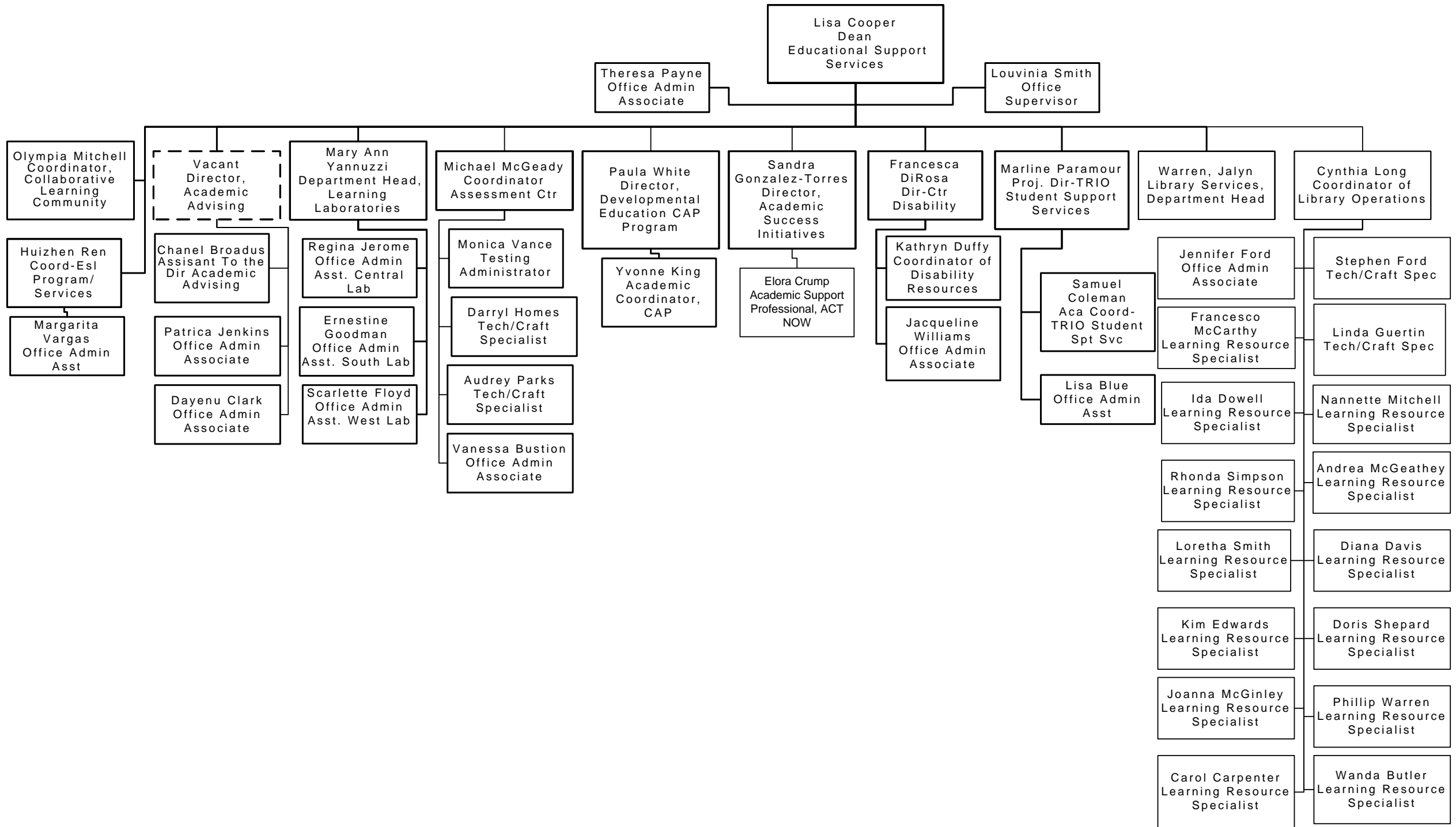
FLEXIBLE LEARNINGS OPTIONS AND ACADEMIC TECHNOLOGY



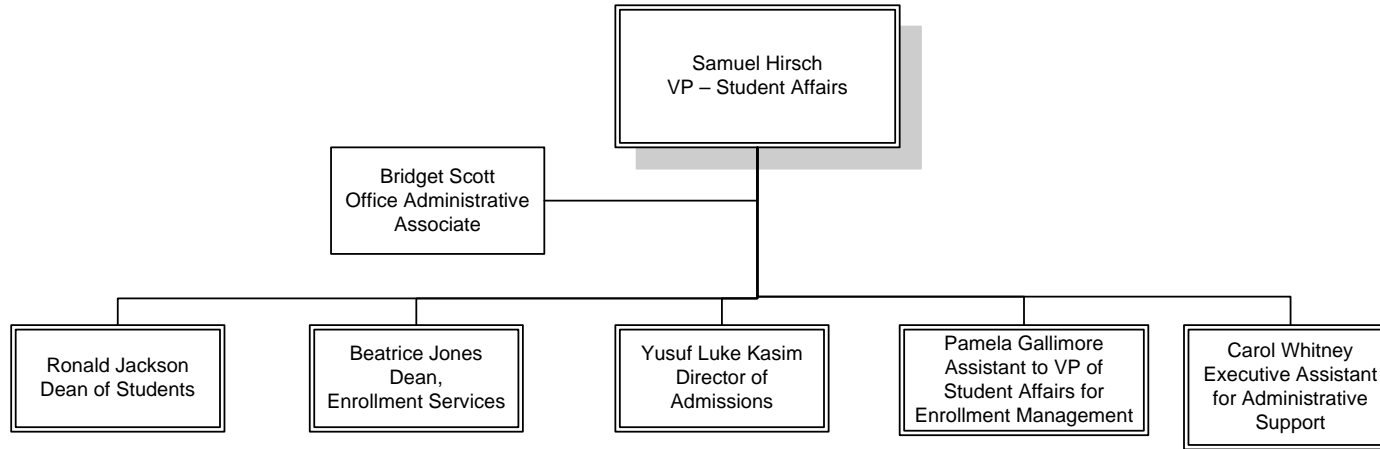
DIVISION OF ADULT AND COMMUNITY EDUCATION



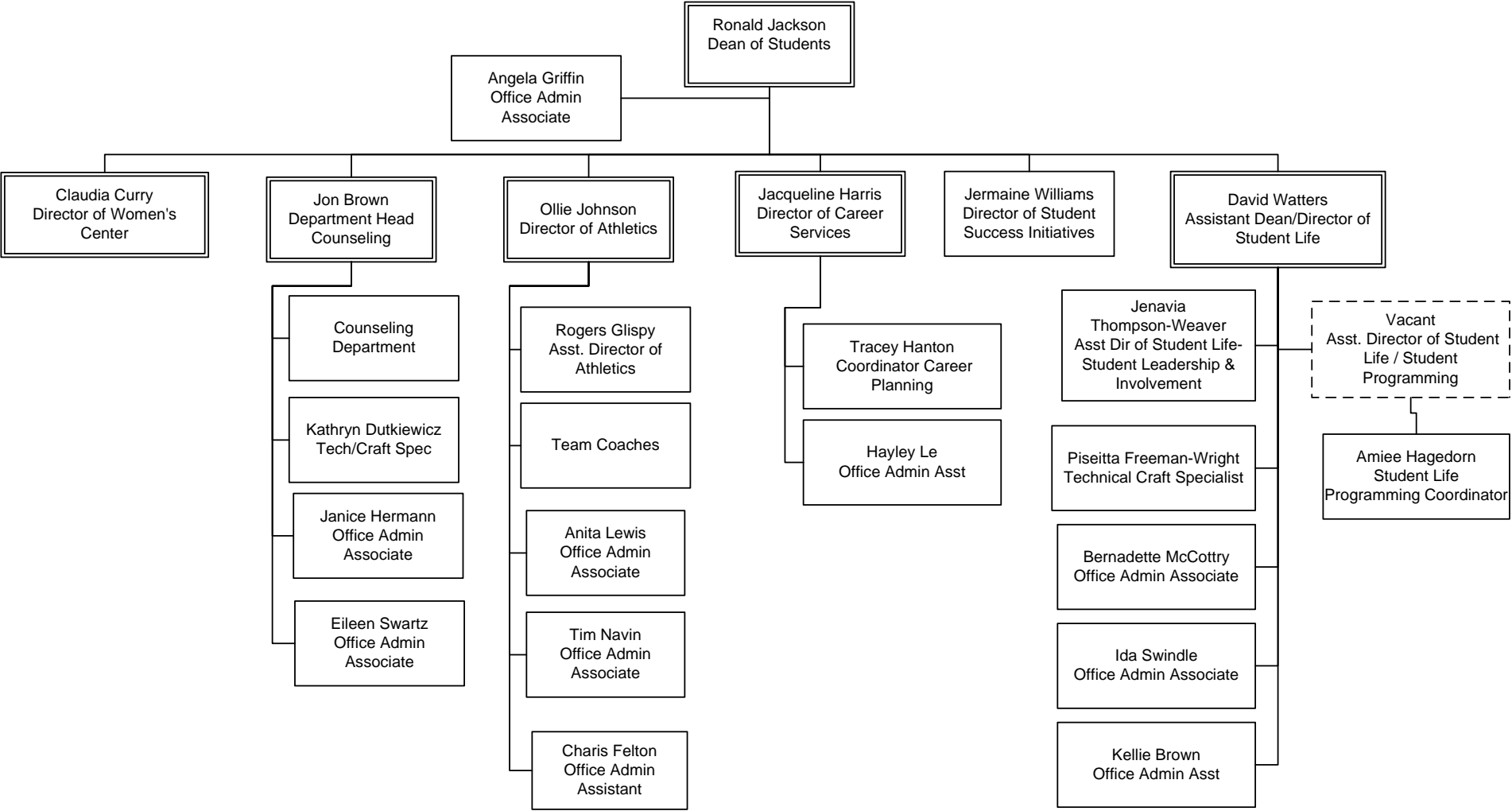
EDUCATIONAL SUPPORT SERVICES



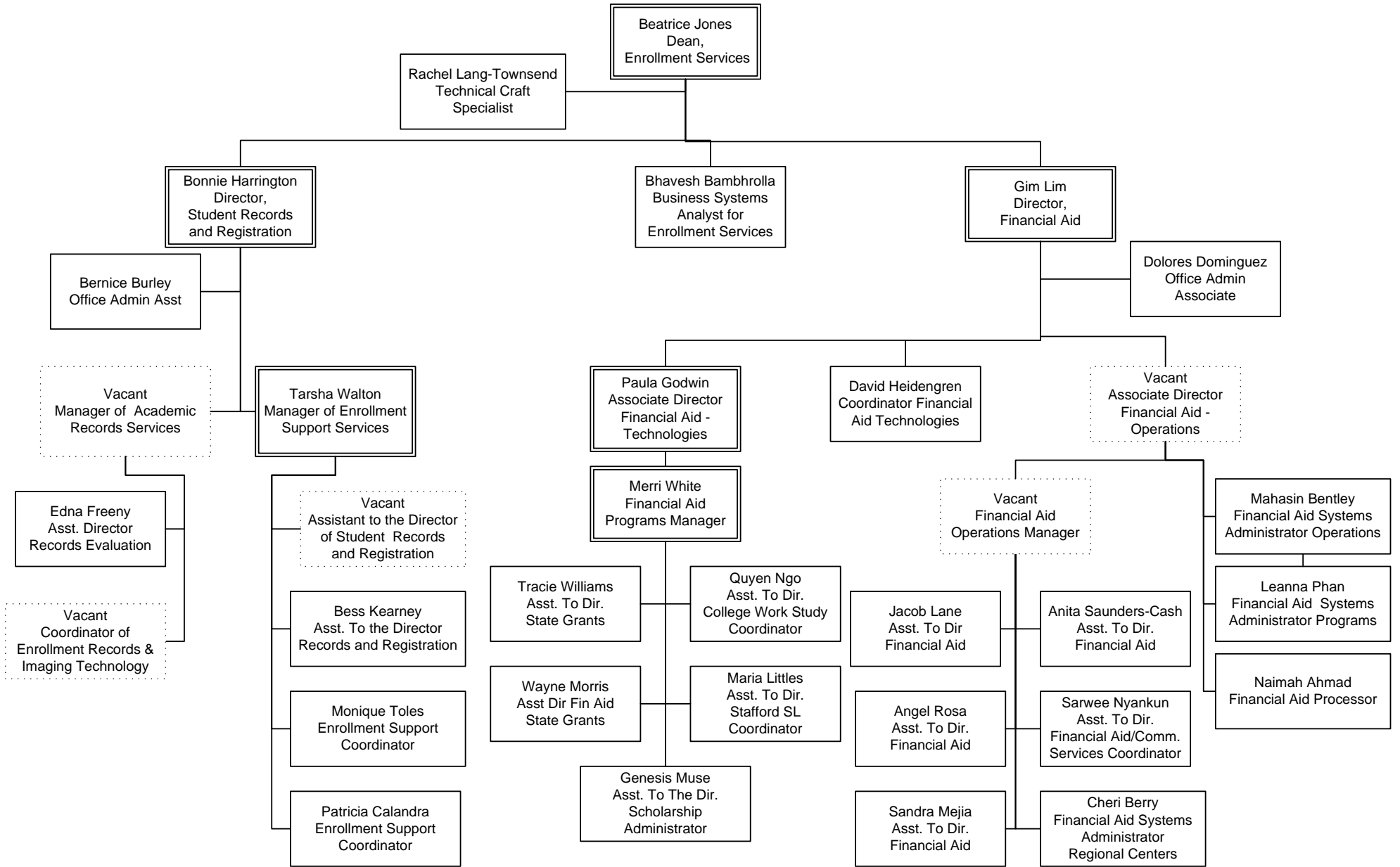
Student Affairs



OFFICE OF THE DEAN OF STUDENTS



Enrollment Services



ADMISSIONS

